

**PROGRESS REPORT OF THE IPCA  
PROJECT ENTITLED “Randomized  
controlled clinical trial to evaluate  
prophylactic properties of Ayurvedic  
Treatment Protocol in refractory and  
chronic migraine patients”**

*Project Progress Report*

**PROGRESS REPORT**

**(April 2012-Dec. 2014)**

**Project title:** “Randomized controlled clinical trial to evaluate prophylactic properties of Ayurvedic Treatment Protocol in refractory and chronic migraine patients”

- 1. PI (name & address):** Dr. Manjari Tripathi  
(Professor)  
Room no: 705, 7<sup>th</sup> floor,  
Dept.of Neurology, AIIMS
  
- 2. Co-PI (name & address):** 1) Prof (Dr) A. K. Mahapatra  
Ex- Head & Professor  
Dept. of Neurosurgery, AIIMS

2) Vaidya Balendu Prakash  
Ayurvedic Consultanat  
Dharamshila Hospital & Research Centre,  
Dharamshila Marg, Vasundhara Enclave  
New Delhi-110096
  
- 3. Date of Start:** 1<sup>st</sup> April, 2012

*Randomized controlled clinical trial to evaluate prophylactic properties of Ayurvedic Treatment Protocol in refractory and chronic migraine patients*

## *Project Progress Report*

### **4. Objectives of the proposal**

- i. To evaluate an Ayurvedic Treatment Protocol to bring long term remission among migraine patients.
- ii. To evaluate the efficacy in reducing the intensity and frequency of pain and associated symptoms in migraine patients.
- iii. To evaluate the Ayurveda approach in migraine patients using modern scientific parameters.

### **5. Methodology**

All the chronic/refractory migraine patients, who presented to the neurology OPD, were included in the study. Patient who failed 3-4 adequate trials of preventive medicines, alone or in combination, from at least 2 of 4 drug classes including: beta-blockers, anticonvulsants, tricyclics, and calcium channel blockers and those who also failed adequate trials of abortive medicines, including both a triptan and dihydroergotamine (DHE) intranasal or injectable formulation and either non steroidal anti-inflammatory drugs (NSAIDs) or combination analgesic, unless contraindicated were included.

Patients were randomized to Ayurvedic Treatment Protocol and Conventional Treatment by random sealed opaque envelopes.

#### ***a) 6.1) Inclusion Criteria:***

##### **1. Age/sex**

- Male or female patient age 18-65 years

##### **2. General health**

- Satisfactory medical assessment with no clinical significant abnormalities except for study related disease condition

*Randomized controlled clinical trial to evaluate prophylactic properties of Ayurvedic Treatment Protocol in refractory and chronic migraine patients*

## *Project Progress Report*

### 3. Condition under study

- Patients suffering from refractory migraine as per the Schulman's Criteria
- History of illness not less than 12 months
- Pain intensity of 6 and above on 10 points VAS (Visual Analogue Scale) Score during the attacks
- Frequency of at least four attacks or more per month
- MIDAS (Migraine Induced Disability Assessment Scale) score of 11 and above

### 4. Compliance

- The patient must understand and be able, willing and likely to fully comply with study procedure and restriction.
- Patient willing for regular follow ups.

### 5. Informed Consent

- The patient willing to give written informed consent.

## **6.2) Exclusion Criteria**

### **1. Conditions other than study**

- Patients having migraine with aura, sinusitis induced headache, patients with refractory headache, post traumatic headache, medication over use headache, intracranial hypertension/hypotension and neuralgias and patient with pseudo refractory migraines.

### **2. Concurrent Diseases**

- Patient with chronic uncontrolled illness, specially diabetes (random blood sugar > 200mg/dl), severe anemia (Hb<gm/dl), epileptic patients, hypertension (SBP> 140mmHg & DBP> 90mm Hg) etc, that require medical therapy.

*Randomized controlled clinical trial to evaluate prophylactic properties of Ayurvedic Treatment Protocol in refractory and chronic migraine patients*

## *Project Progress Report*

- Patient with abnormal renal function or abnormal liver function, evidence of cirrhosis or portal hypertension
- Patient with known history of HIV 1 and HIV 2, Hepatitis B or C infection or syphilis infection
- Patient suffering from malignancy, mental illness or any other cardiovascular disease

### **3. Concomitant Medications**

- Patients on steroids

### **4. Allergy/Intolerance**

- Patients with known history of hypersensitivity to any medication

### **5. Substance Abuse**

- Patients consuming alcohol > more than 2 ounce a day

### **6. Participation in clinical trial previously**

- Patient must not have used another investigational agent/device or participated in a clinical trial within the last 30 days prior to enrollment.

### **7. Others**

- Pregnant or lactating woman
- Women of childbearing potential not practicing contraception

*Randomized controlled clinical trial to evaluate prophylactic properties of Ayurvedic Treatment Protocol in refractory and chronic migraine patients*

## *Project Progress Report*

### ➤ **Screening Visit**

The written informed consent from each patient was taken before doing any study related procedure. The demographic data of patients were recorded after obtaining the informed consent. Previous and current medical history has been recorded. All laboratory investigations (Hematology, Biochemistry) and CT scan were performed.

### ➤ **Baseline Visit**

Eligibility criteria were reassessed and eligible patients were enrolled. They were randomized to one of the treatment arms. One group received conventional therapy and other group received Ayurvedic Treatment Protocol.

Patients were evaluated for headache days, pain intensity (VAS), headache frequency, duration and associated symptoms. Patient visited the hospital at day 30, 60, 90, 120, 150, and 180 with  $\pm 2$  days allowance.

### **Dose schedule of the Ayurvedic Medicine**

<b>Name</b>	<b>Dose*</b>	<b>Anupan</b>	<b>Schedule</b>
Narikela lavana (powder 1g)	BD	150 g yogurt 50 ml water	On empty stomach at Breakfast & Dinner
Numax (500 mg Capsule)	BD	Water	At breakfast & dinner
Rasonadi vati (500 mg Tablet)	2 TDS	Hot water	After breakfast, lunch & dinner
Godhanti mishran (500 mg Tablet)	OD	Mishri	At bed time

\* OD- Once daily; BD – Both daily; TDS – Thrice daily

*Randomized controlled clinical trial to evaluate prophylactic properties of Ayurvedic Treatment Protocol in refractory and chronic migraine patients*

## *Project Progress Report*

### **6. Results**

Till now, **One Hundred Two** Migraine patients have been enrolled in the trial. Out of these Forty eight have been given the Ayurvedic Treatment Protocol and Fifty Four have been given the conventional treatment. A total 102 patients were evaluated who had completed a treatment of at least 30 days. A significant reduction in pain intensity Scale (VAS) and MIDAS was observed.

Details of Figures:

1. Fig. 1 VAS=Visual Analogue Score

i) Fig. 1(a): Pain Intensity of Ayurvedic Treatment Protocol. VAS=Visual Analogue Score

X-Axis= No. Of Patients

Y-Axis= VAS Score

ii) Fig. 1(b): Pain Intensity of Conventional Treatment Protocol. VAS=Visual Analogue Score

X-Axis= No. Of Patients

Y-Axis= VAS Score

2. Fig. 2 MIDAS= Migraine Disability Assessment Scale

i. Fig. 2(a): Migraine Disability Assessment Scale of Ayurvedic Treatment Protocol.

X-Axis= No. Of Patients

Y-Axis= MIDAS Score

iii) Fig. 2(b): Migraine Disability Assessment Scale of Conventional Treatment Protocol.

X-Axis= No. Of Patients

Y-Axis= MIDAS Score

*Project Progress Report*

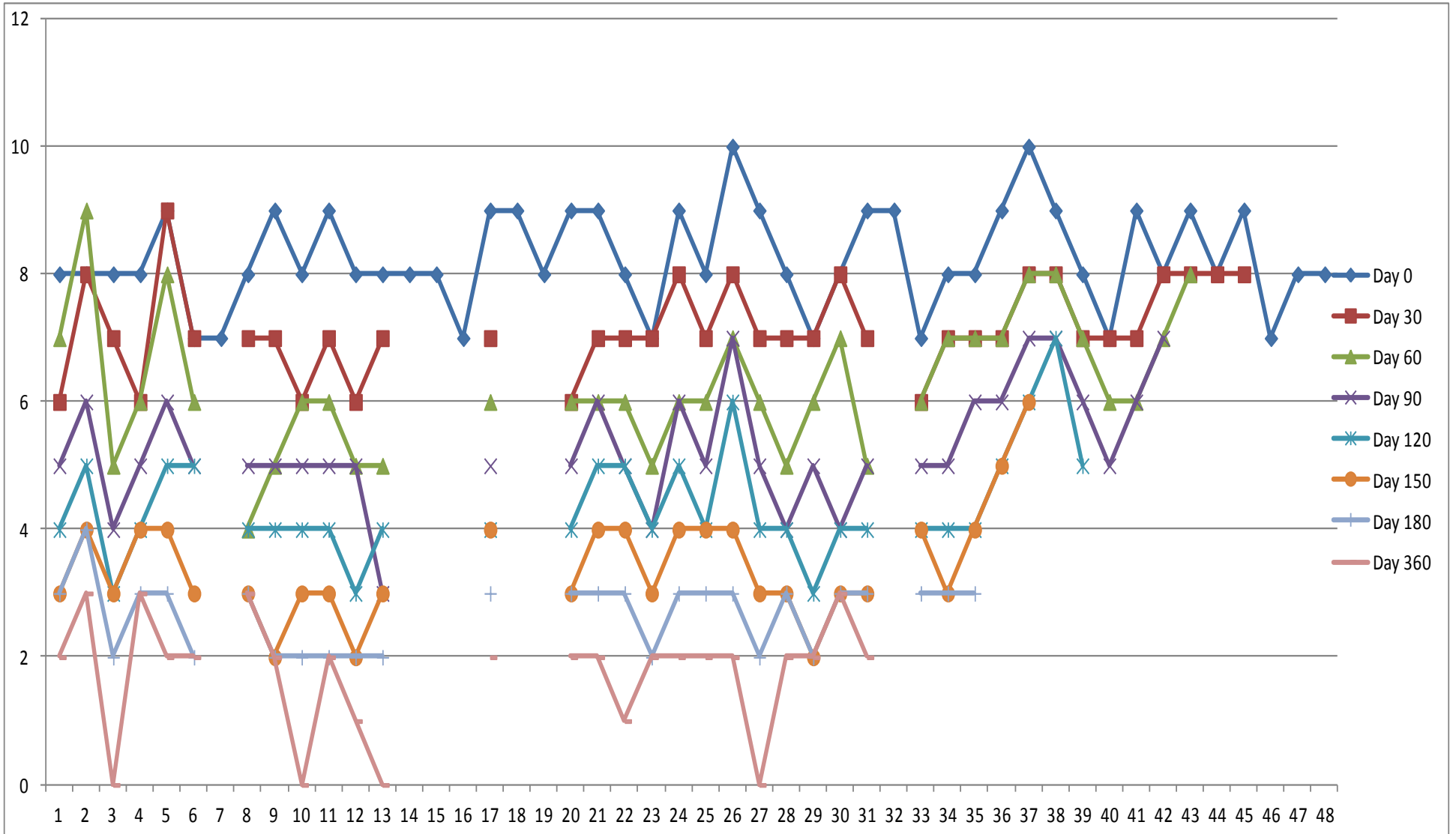


Fig. 1(a): Pain Intensity of Ayurvedic Treatment Protocol. VAS=Visual Analogue Score

(Note: Patient No. 7, 14, 15, 16, 18, 19, 32 dropped out from the trial on first follow up date)

*Randomized controlled clinical trial to evaluate prophylactic properties of Ayurvedic Treatment Protocol in refractory and chronic migraine patients*



*Project Progress Report*

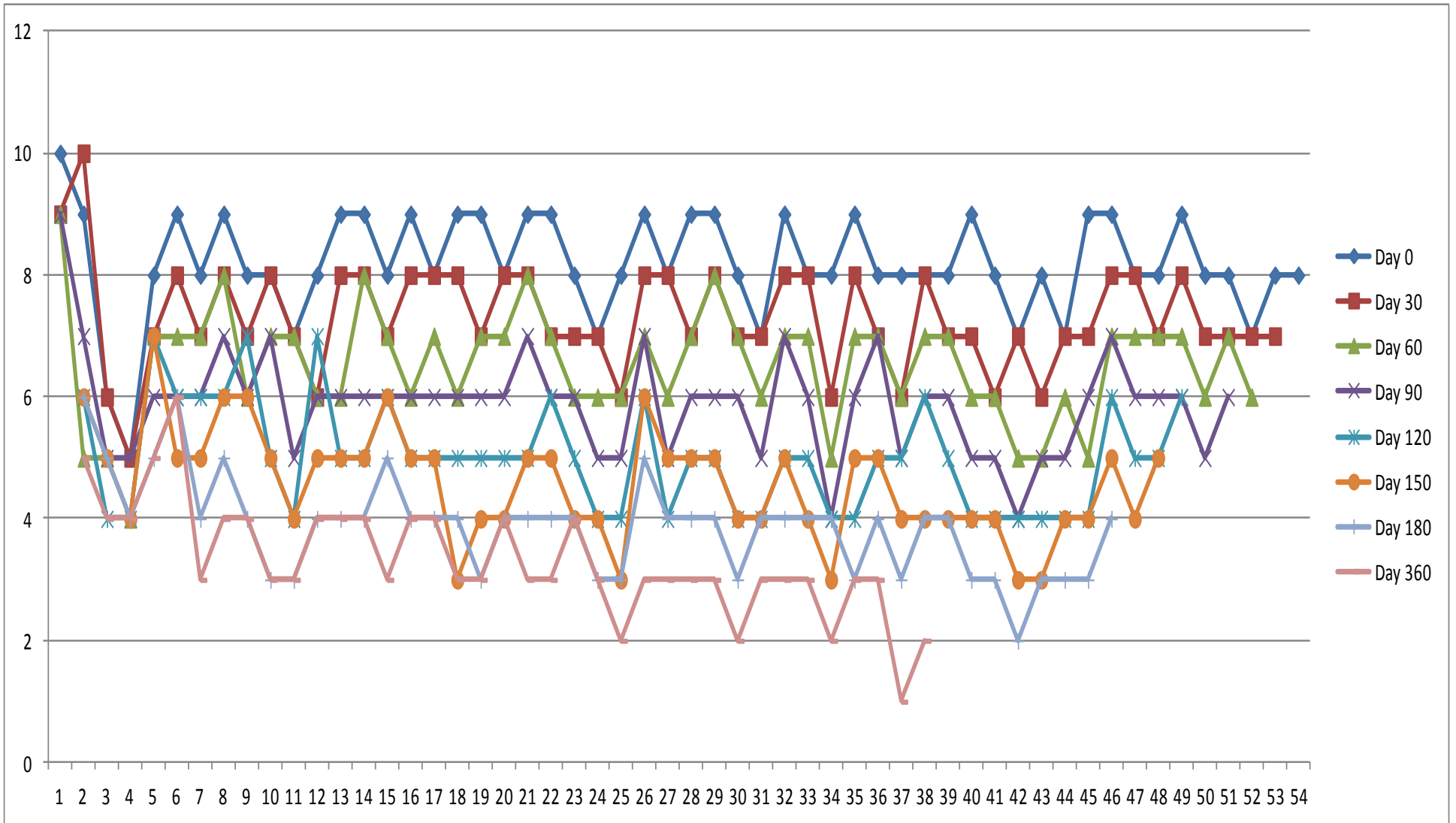


Fig. 1(b): Pain Intensity of Conventional Treatment Protocol.

VAS=Visual Analogue Score

*Randomized controlled clinical trial to evaluate prophylactic properties of Ayurvedic Treatment Protocol in refractory and chronic migraine patients*

*Project Progress Report*

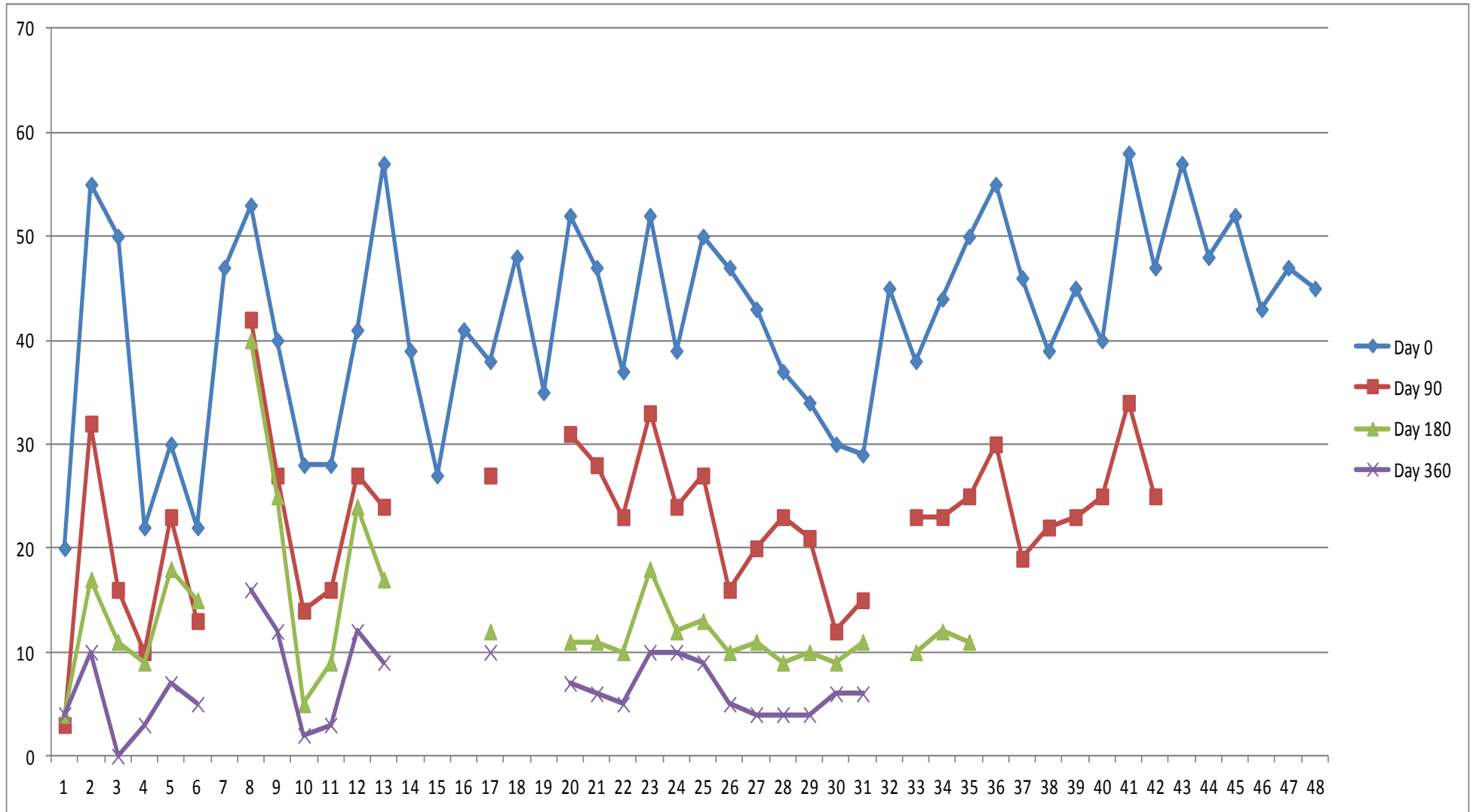


Fig. 2(a): MIDAS Scale of Ayurvedic Treatment Protocol. MIDAS = Migraine Disability Assessment Scale

(Note: Patient No. 7, 14, 15, 16, 18, 19, 32 dropped out from the trial on first follow up date)

*Randomized controlled clinical trial to evaluate prophylactic properties of Ayurvedic Treatment Protocol in refractory and chronic migraine patients*

*Project Progress Report*

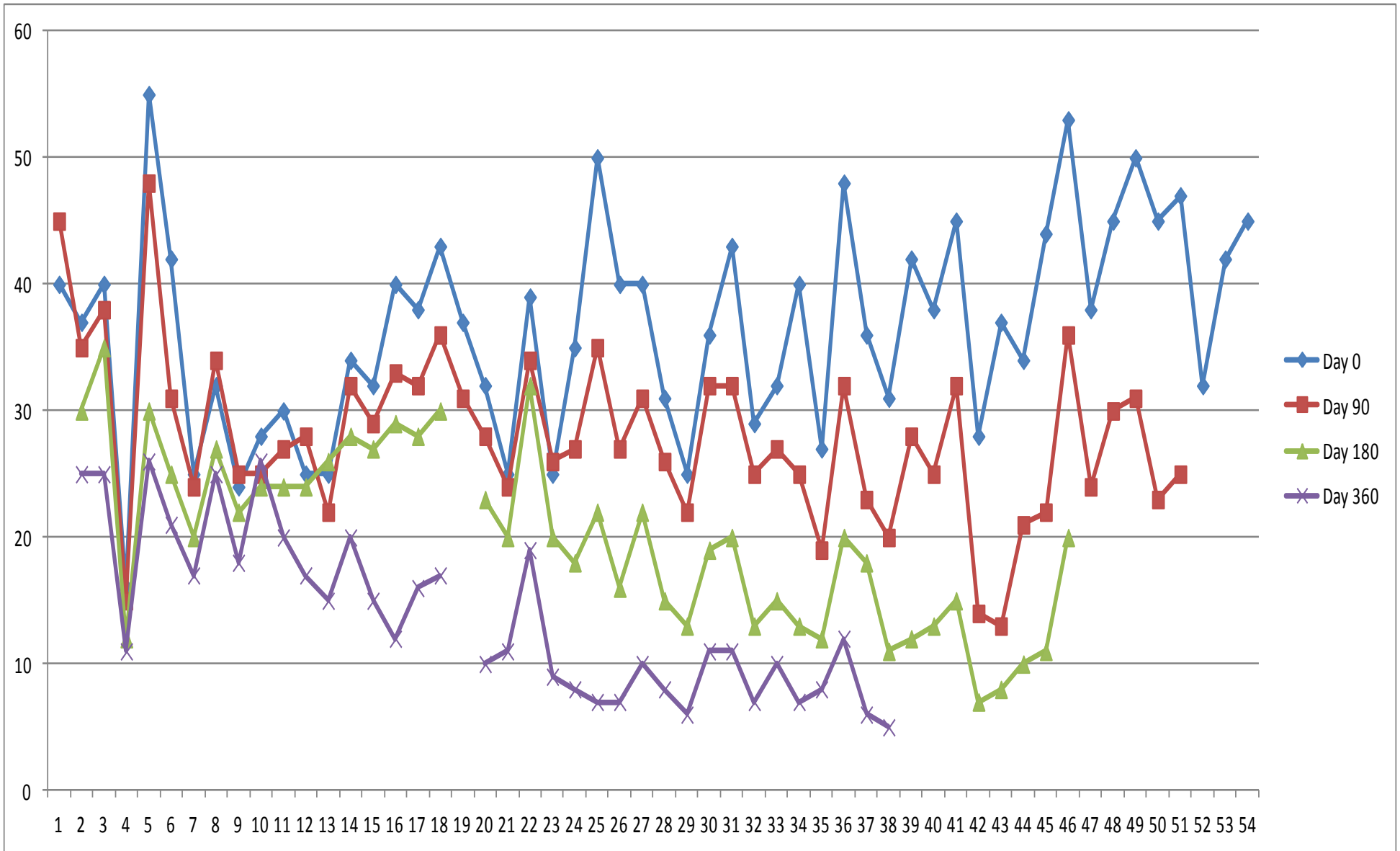


Fig. 2(b): MIDAS Scale of Conventional Treatment Protocol. MIDAS = Migraine Disability Assessment Scale.

*Randomized controlled clinical trial to evaluate prophylactic properties of Ayurvedic Treatment Protocol in refractory and chronic migraine patients*

*Project Progress Report*

**Table – 1: Baseline Disease Characteristics of Ayurvedic Treatment Group**

Sr. No	CRF No.	Age	Sex	History (in years)	Frequency	Symptoms				VAS	MIDAS	No. of Headache	Conventional Prophylaxis Treatment	Relieving Factor
						Nausea	Vomiting	Photophobia	Phonophobia	Pre-ATP	Pre-ATP	Pre-ATP (Last 3 months)		
1	001	28	F	14	>4 times a month	√	√	√	√	8	20	90	YES	Sleep, Pain Killer, Pregnancy
2	003	32	F	6	>4 times a month	√	√	√	√	8	55	90	YES	Painkiller
3	004	27	F	3	>4 times a month	√	√	√	√	8	50	60	YES	Sleep, Pain Killer
4	005	24	F	14	>4 times a month	x	x	√	√	8	22	90	YES	Sleep, Exhilaration, Painkiller
5	006	41	F	15	>4 times a month	√	√	√	√	9	30	36	YES	Sleep
6	008	38	F	11	>4 times a month	√	√	√	√	7	22	30	YES	Sleep
7	009	46	M	28	>4 times a month	x	x	√	√	7	47	90	YES	Sleep, Pain Killer, Exercise
8	010	36	F	>20 years	>4 times a month	√	√	√	√	8	53	45	YES	Sleep, Pain Killer
9	011	47	F	17	>4 times a month	√	√	√	√	9	40	90	YES	Sleep, Pain Killer
10	015	41	F	2	>4 times a month	√	√	√	√	8	28	36	YES	Sleep
11	016	51	M	6	2-4 times a month	√	√	√	√	9	28	60	YES	Sleep, Pain Killer
12	024	50	F	7	>4 times a month	√	x	√	√	8	41	66	YES	Sleep, Pain Killer
13	029	28	M	15	>4 times a month	√	√	√	√	7	57	33	YES	Sleep
14	031	42	F	5	>4 times a month	√	√	x	√	8	39	39	YES	Sleep, Pain Killer
15	036	22	M	3	>4 times a month	√	x	√	√	8	27	43	YES	Sleep
16	039	18	M	1	2-4 times a month	√	x	√	√	7	41	36	YES	Sleep
17	047	30	F	6	2-4 times a month	√	√	√	√	9	38	90	YES	Sleep, Pain Killer
18	048	26	F	4	2-4 times a month	x	√	√	√	9	48	39	YES	Sleep, Exhilaration, Painkiller
19	050	27	M	1	2-4 times a month	x	√	x	√	8	35	30	YES	Sleep, Pain Killer
20	053	40	F	15	>4 times a month	√	√	√	√	9	52	65	YES	Sleep, Pain Killer
21	055	30	F	1.5	2-4 times a month	√	√	√	√	9	47	60	YES	Sleep, Pain Killer, Pregnancy
22	058	39	F	20	>4 times a month	√	√	√	√	8	37	90	YES	Sleep, Exhilaration, Painkiller
23	059	36	F	5	2-4 times a month	√	x	√	x	7	52	45	YES	Sleep, Pain Killer
24	060	26	F	2	>4 times a month	√	√	x	√	9	39	36	YES	Sleep, Pain Killer

*Randomized controlled clinical trial to evaluate prophylactic properties of Ayurvedic Treatment Protocol in refractory and chronic migraine patients*

***Project Progress Report***

Sr. No	CRF No.	Age	Sex	History (in years)	Frequency	Symptoms				VAS	MIDAS	No. of Headache	Conventional Prophylaxis Treatment	Relieving Factor
						Nausea	Vomiting	Photophobia	Phonophobia	Pre-ATP	Pre-ATP	Pre-ATP (Last 3 months)		
25	061	43	F	8	>4 times a month	√	√	√	x	8	50	60	YES	Sleep, Exhilaration, Painkiller
26	063	25	F	5	2-4 times a month	√	√	√	√	10	47	45	YES	Sleep
27	064	40	M	4	2-4 times a month	x	√	√	√	9	43	33	YES	Sleep, Pain Killer
28	066	25	F	9	>4 times a month	√	√	√	√	8	37	66	YES	Sleep, Pain Killer
29	067	40	F	3	2-4 times a month	√	√	√	√	7	34	35	YES	Sleep
30	068	50	M	2	2-4 times a month	√	x	√	x	8	30	45	YES	Sleep
31	069	36	F	10	>4 times a month	√	√	√	√	9	29	90	YES	Sleep, Pain Killer
32	070	44	F	10	>4 times a month	√	√	√	√	9	45	90	YES	Sleep, Exhilaration, Painkiller
33	076	26	M	3	2-4 times a month	√	x	√	√	7	38	30	YES	Sleep
34	078	42	M	5	>4 times a month	√	√	√	x	8	44	60	YES	Sleep, Exhilaration, Painkiller
35	080	18	F	2	2-4 times a month	√	√	√	x	8	50	60	YES	Sleep, Exhilaration, Painkiller
36	085	36	F	3	>4 times a month	√	√	√	x	9	55	65	YES	Sleep, Pain Killer, Pregnancy
37	082	36	M	6	>4 times a month	√	√	√	√	10	46	90	YES	Sleep, Pain Killer
38	086	35	F	6	>4 times a month	√	√	√	√	9	39	75	YES	Painkiller
39	088	20	F	4	>4 times a month	√	√	√	x	8	45	48	YES	Sleep, Pain Killer
40	089	35	M	2	2-4 times a month	√	x	√	√	7	40	75	YES	Sleep, Pain Killer
41	091	60	F	1	>4 times a month	√	√	√	√	9	58	90	YES	Sleep, Pain Killer
42	093	20	F	1.5	2-4 times a month	x	√	x	√	8	47	50	YES	Sleep
43	094	44	F	4	>4 times a month	√	x	√	√	9	57	66	YES	Sleep, Exhilaration, Painkiller
44	096	62	M	5	>4 times a month	√	√	x	√	8	48	45	YES	Sleep, Pain Killer
45	098	28	M	1	2-4 times a month	√	x	√	√	9	52	60	YES	Painkiller
46	099	24	F	3	2-4 times a month	x	√	√	x	7	43	35	YES	Sleep
47	100	31	F	4	>4 times a month	√	x	√	√	8	47	60	YES	Sleep, Pain Killer
48	102	40	F	1.5	2-4 times a month	√	x	√	√	8	45	45	YES	Sleep, Pain Killer

***Randomized controlled clinical trial to evaluate prophylactic properties of Ayurvedic Treatment Protocol in refractory and chronic migraine patients***

*Project Progress Report*

**Table - 2: Associated Symptoms of Ayurvedic Treatment Group at Day 0**

Sr. No.	Age	Sex	CRF No.	Day 0												
				Nausea	Vomiting	Photophobia	Phonophobia	Fatigue	Blurred Vision	Ear Ache	Tinnitus	Sweats	Heart Burning	Flatus	Belching	Constipation
1	28	F	001	Yes	Yes	Yes	Yes	Yes	No	No	No	Yes	Yes	Yes	Yes	Yes
2	32	F	003	Yes	Yes	No	Yes	Yes	Yes	No	No	Yes	Yes	Yes	Yes	No
3	27	F	004	Yes	No	Yes	Yes	Yes	No	No	No	Yes	No	Yes	No	No
4	24	F	005	Yes	Yes	Yes	Yes	Yes	Yes	Yes	No	No	No	No	Yes	No
5	41	F	006	Yes	Yes	Yes	Yes	Yes	Yes	Yes	Yes	Yes	Yes	Yes	Yes	No
6	38	F	008	Yes	Yes	Yes	Yes	Yes	Yes	No	No	Yes	No	No	No	No
7	46	M	009	No	No	Yes	Yes	Yes	Yes	No	No	No	No	Yes	Yes	Yes
8	36	F	010	Yes	Yes	Yes	Yes	Yes	No	No	No	Yes	No	Yes	Yes	No
9	47	F	011	Yes	Yes	Yes	Yes	Yes	Yes	Yes	Yes	Yes	Yes	Yes	Yes	Yes
10	41	F	015	Yes	No	Yes	Yes	Yes	Yes	No	Yes	No	No	No	Yes	No
11	51	M	016	Yes	No	Yes	Yes	Yes	Yes	No	No	No	No	No	No	No
12	50	F	024	Yes	No	Yes	Yes	Yes	No	No	No	No	No	No	No	Yes
13	28	M	029	Yes	Yes	Yes	Yes	No	No	No	No	No	No	No	Yes	Yes
14	42	F	031	Yes	Yes	No	Yes	No	Yes	No	No	Yes	Yes	No	Yes	Yes
15	22	M	036	Yes	No	Yes	Yes	Yes	No	No	No	No	No	No	Yes	Yes
16	18	M	039	Yes	No	Yes	Yes	Yes	No	No	No	Yes	No	No	Yes	Yes
17	30	F	047	Yes	Yes	Yes	Yes	Yes	Yes	No	Yes	Yes	No	Yes	No	Yes
18	26	F	048	No	Yes	Yes	Yes	Yes	No	Yes	No	Yes	No	No	Yes	Yes
19	27	M	050	No	Yes	No	Yes	Yes	No	No	No	Yes	No	Yes	Yes	No
20	40	F	053	Yes	Yes	Yes	Yes	No	No	Yes	Yes	No	Yes	No	No	Yes
21	30	F	055	Yes	Yes	Yes	Yes	Yes	No	No	Yes	Yes	Yes	Yes	Yes	Yes
22	39	F	058	Yes	Yes	Yes	Yes	Yes	Yes	No	No	Yes	No	Yes	No	Yes
23	36	F	059	Yes	No	Yes	No	Yes	Yes	Yes	No	Yes	No	Yes	Yes	Yes
24	26	F	060	Yes	Yes	No	Yes	Yes	No	No	Yes	Yes	Yes	No	Yes	No

*Randomized controlled clinical trial to evaluate prophylactic properties of Ayurvedic Treatment Protocol in refractory and chronic migraine patients*

***Project Progress Report***

Sr. No.	Age	Sex	CRF No.	Day 0												
				Nausea	Vomiting	Photophobia	Phonophobia	Fatigue	Blurred Vision	Ear Ache	Tinnitus	Sweats	Heart Burning	Flatus	Belching	Constipation
25	43	F	061	Yes	Yes	Yes	No	No	Yes	Yes	Yes	Yes	No	No	No	Yes
26	25	F	063	Yes	Yes	Yes	Yes	Yes	No	No	No	Yes	No	No	No	Yes
27	40	M	064	No	Yes	Yes	Yes	Yes	Yes	No	Yes	No	Yes	No	Yes	Yes
28	25	F	066	Yes	Yes	Yes	Yes	No	No	Yes	Yes	Yes	No	No	Yes	Yes
29	40	F	067	Yes	Yes	Yes	Yes	Yes	Yes	Yes	No	Yes	No	Yes	No	Yes
30	50	M	068	Yes	No	Yes	No	Yes	No	No	No	No	No	No	Yes	Yes
31	36	F	069	Yes	Yes	Yes	Yes	Yes	Yes	No	No	Yes	Yes	No	No	No
32	44	F	070	Yes	Yes	Yes	Yes	Yes	Yes	Yes	No	No	No	Yes	No	Yes
33	26	M	076	Yes	No	Yes	Yes	Yes	No	No	No	Yes	No	No	No	Yes
34	42	M	078	Yes	Yes	Yes	No	Yes	No	Yes	No	Yes	Yes	No	No	Yes
35	18	F	080	Yes	Yes	Yes	No	No	Yes	No	No	No	No	No	No	Yes
36	36	F	085	Yes	Yes	Yes	No	No	No	No	No	Yes	No	No	Yes	No
37	36	M	082	Yes	Yes	Yes	Yes	Yes	Yes	Yes	No	Yes	Yes	Yes	Yes	Yes
38	35	F	086	Yes	Yes	Yes	Yes	Yes	No	No	No	No	No	Yes	Yes	No
39	20	F	088	Yes	Yes	Yes	No	Yes	No	Yes	No	No	No	Yes	No	No
40	35	M	089	Yes	No	Yes	Yes	No	No	No	Yes	Yes	No	No	No	Yes
41	60	F	091	Yes	Yes	Yes	Yes	Yes	Yes	No	No	No	No	No	Yes	No
42	20	F	093	No	Yes	No	Yes	Yes	No	No	No	Yes	No	No	No	Yes
43	44	F	094	Yes	No	Yes	Yes	Yes	Yes	Yes	Yes	No	Yes	Yes	No	No
44	62	M	096	Yes	Yes	No	Yes	Yes	No	No	Yes	No	No	No	Yes	Yes
45	28	M	098	Yes	No	Yes	Yes	No	No	No	No	Yes	No	No	Yes	No
46	24	F	099	No	Yes	Yes	No	No	No	No	No	Yes	No	No	Yes	No
47	31	F	100	Yes	No	Yes	Yes	Yes	Yes	Yes	No	Yes	Yes	Yes	No	Yes
48	40	F	102	Yes	No	Yes	Yes	No	No	Yes	Yes	No	Yes	No	Yes	No

***Randomized controlled clinical trial to evaluate prophylactic properties of Ayurvedic Treatment Protocol in refractory and chronic migraine patients***

*Project Progress Report*

**Table - 3: Associated Symptoms of Ayurvedic Treatment Group at Day 30**

Sr. No.	Age	Sex	CRF No.	Day 30												
				Nausea	Vomiting	Photophobia	Phonophobia	Fatigue	Blurred Vision	Ear Ache	Tinnitus	Sweats	Heart Burning	Flatus	Belching	Constipation
1	28	F	001	No	No	Yes	Yes	Yes	Yes	No	No	No	No	No	No	No
2	32	F	003	Yes	No	No	Yes	Yes	Yes	No	Yes	Yes	Yes	Yes	Yes	No
3	27	F	004	No	No	Yes	Yes	No	No	No	No	Yes	No	Yes	Yes	No
4	24	F	005	No	No	Yes	Yes	Yes	Yes	Yes	No	No	No	Yes	No	No
5	41	F	006	No	Yes	Yes	Yes	Yes	Yes	Yes	Yes	Yes	No	Yes	Yes	No
6	38	F	008	No	No	Yes	Yes	Yes	Yes	No	Yes	Yes	Yes	No	No	No
7	46	M	009	Lost to Follow up												
8	36	F	010	Yes	Yes	Yes	Yes	Yes	No	No	No	Yes	No	Yes	Yes	No
9	47	F	011	Yes	Yes	No	No	No	No	No	No	No	No	No	No	No
10	41	F	015	Yes	No	Yes	No	Yes	Yes	No	No	No	No	No	No	No
11	51	M	016	Yes	No	Yes	No	Yes	Yes	No	No	No	No	No	No	No
12	50	F	024	Yes	No	Yes	No	Yes	No	No	No	No	No	No	No	Yes
13	28	M	029	Yes	No	Yes	Yes	No	No	No	No	No	No	No	Yes	Yes
14	42	F	031	Lost to Follow up												
15	22	M	036	Lost to Follow up												
16	18	M	039	Yes	Yes	Yes	Yes	No	No	No	No	No	No	No	Yes	Yes
17	30	F	047	Yes	Yes	No	No	No	No	No	Yes	No	No	No	Yes	Yes
18	26	F	048	Lost to Follow up												
19	27	M	050	Lost to Follow up												
20	40	F	053	Yes	Yes	No	Yes	No	No	Yes	Yes	No	Yes	No	No	Yes
21	30	F	055	Yes	Yes	Yes	Yes	Yes	No	No	Yes	Yes	Yes	No	Yes	Yes
22	39	F	058	Yes	Yes	Yes	No	Yes	Yes	No	No	Yes	No	No	No	Yes
23	36	F	059	Yes	No	Yes	No	Yes	Yes	No	No	Yes	No	No	Yes	Yes
24	26	F	060	Yes	Yes	No	No	Yes	No	No	No	Yes	Yes	No	Yes	No

*Randomized controlled clinical trial to evaluate prophylactic properties of Ayurvedic Treatment Protocol in refractory and chronic migraine patients*



*Project Progress Report*

Sr. No.	Age	Sex	CRF No.	Day 30												
				Nausea	Vomiting	Photophobia	Phonophobia	Fatigue	Blurred Vision	Ear Ache	Tinnitus	Sweats	Heart Burning	Flatus	Belching	Constipation
25	43	F	061	No	Yes	Yes	No	No	No	Yes	Yes	Yes	No	No	No	Yes
26	25	F	063	Yes	No	Yes	Yes	Yes	No	No	No	No	No	No	No	Yes
27	40	M	064	No	Yes	Yes	Yes	Yes	No	No	No	No	Yes	No	Yes	Yes
28	25	F	066	Yes	No	Yes	Yes	No	No	No	Yes	Yes	No	No	No	Yes
29	40	F	067	Yes	Yes	Yes	No	Yes	Yes	No	No	Yes	No	Yes	No	No
30	50	M	068	Yes	No	No	No	Yes	No	No	No	No	No	No	Yes	Yes
31	36	F	069	Yes	Yes	Yes	No	Yes	Yes	No	No	Yes	No	No	No	No
32	44	F	070	Lost to Follow up												
33	26	M	076	Yes	No	Yes	Yes	Yes	No	No	No	Yes	No	No	No	No
34	42	M	078	Yes	Yes	Yes	No	Yes	No	Yes	No	Yes	No	No	No	Yes
35	18	F	080	Yes	No	Yes	No	No	No	No	No	No	No	No	No	Yes
36	36	F	085	No	Yes	Yes	No	No	No	No	No	Yes	No	No	Yes	No
37	36	M	082	Yes	Yes	No	Yes	Yes	No	Yes	No	Yes	No	Yes	Yes	Yes
38	35	F	086	Yes	Yes	Yes	Yes	No	No	No	No	No	No	Yes	Yes	No
39	20	F	088	Yes	No	Yes	No	Yes	No	Yes	No	No	No	Yes	No	No
40	35	M	089	Yes	No	Yes	Yes	No	No	No	Yes	Yes	No	No	No	Yes
41	60	F	091	Yes	Yes	Yes	Yes	No	Yes	No	No	No	No	No	Yes	No
42	20	F	093	No	Yes	No	Yes	Yes	No	No	No	Yes	No	No	No	Yes
43	44	F	094	Yes	No	Yes	Yes	Yes	Yes	No	Yes	No	Yes	Yes	No	No
44	62	M	096	Yes	Yes	No	Yes	Yes	No	No	No	No	No	No	Yes	Yes
45	28	M	098	Yes	No	Yes	Yes	No	No	No	No	No	No	No	Yes	No
46	24	F	099	On ATP												
47	31	F	100	On ATP												
48	40	F	102	On ATP												

*Randomized controlled clinical trial to evaluate prophylactic properties of Ayurvedic Treatment Protocol in refractory and chronic migraine patients*

*Project Progress Report*

**Table - 4: Associated Symptoms of Ayurvedic Treatment Group at Day 60**

Sr. No.	Age	Sex	CRF No.	Day 60												
				Nausea	Vomiting	Photophobia	Phonophobia	Fatigue	Blurred Vision	Ear Ache	Tinnitus	Sweats	Heart Burning	Flatus	Belching	Constipation
1	28	F	001	No	No	Yes	Yes	Yes	No	No	No	Yes	Yes	Yes	Yes	Yes
2	32	F	003	Yes	No	Yes	Yes	Yes	No	No	Yes	Yes	No	Yes	No	No
3	27	F	004	No	No	Yes	Yes	No	No	No	No	No	No	No	No	No
4	24	F	005	No	No	Yes	Yes	No	No	No	No	No	No	No	No	No
5	41	F	006	No	No	Yes	Yes	No	Yes	Yes	No	No	No	Yes	No	No
6	38	F	008	No	No	No	Yes	No	Yes	No	Yes	No	No	No	No	No
7	46	M	009	Lost to Follow up												
8	36	F	010	No	No	No	No	Yes	No	No	No	Yes	No	Yes	No	Yes
9	47	F	011	Yes	No	No	No	No	No	No	No	No	No	No	No	No
10	41	F	015	Yes	No	Yes	No	Yes	Yes	No	No	No	No	No	No	No
11	51	M	016	Yes	No	Yes	No	No	Yes	No	No	No	No	No	No	No
12	50	F	024	Yes	No	Yes	No	Yes	No	No	No	No	No	No	No	Yes
13	28	M	029	No	No	Yes	Yes	No	No	No	No	No	No	No	Yes	No
14	42	F	031	Lost to Follow up												
15	22	M	036	Lost to Follow up												
16	18	M	039	Yes	No	No	No	No	No	No	No	No	No	No	Yes	Yes
17	30	F	047	Yes	No	No	No	No	No	No	No	No	No	No	Yes	No
18	26	F	048	Lost to Follow up												
19	27	M	050	Lost to Follow up												
20	40	F	053	Yes	Yes	No	Yes	No	No	No	No	No	Yes	No	No	Yes
21	30	F	055	Yes	Yes	Yes	Yes	Yes	No	No	Yes	Yes	Yes	No	No	Yes
22	39	F	058	Yes	No	Yes	No	Yes	No	No	No	Yes	No	No	No	Yes
23	36	F	059	Yes	No	Yes	No	Yes	No	No	No	Yes	No	No	No	No
24	26	F	060	Yes	No	No	No	Yes	No	No	No	Yes	No	No	No	No

*Randomized controlled clinical trial to evaluate prophylactic properties of Ayurvedic Treatment Protocol in refractory and chronic migraine patients*

*Project Progress Report*

Sr. No.	Age	Sex	CRF No.	Day 60												
				Nausea	Vomiting	Photophobia	Phonophobia	Fatigue	Blurred Vision	Ear Ache	Tinnitus	Sweats	Heart Burning	Flatus	Belching	Constipation
25	43	F	061	No	No	Yes	No	No	No	Yes	No	Yes	No	No	No	Yes
26	25	F	063	No	No	Yes	Yes	No	No	No	No	No	No	No	No	Yes
27	40	M	064	No	Yes	Yes	No	Yes	No	No	No	No	Yes	No	No	Yes
28	25	F	066	Yes	No	Yes	No	No	No	No	No	Yes	No	No	No	No
29	40	F	067	Yes	No	Yes	No	Yes	Yes	No	No	Yes	No	Yes	No	No
30	50	M	068	Yes	No	No	No	No	No	No	No	No	No	No	Yes	No
31	36	F	069	Yes	No	Yes	No	Yes	No	No	No	Yes	No	No	No	No
32	44	F	070	Lost to Follow up												
33	26	M	076	Yes	No	Yes	No	Yes	No	No	No	Yes	No	No	No	No
34	42	M	078	Yes	Yes	Yes	No	Yes	No	Yes	No	Yes	No	No	No	Yes
35	18	F	080	Yes	No	No	No	No	No	No	No	No	No	No	No	Yes
36	36	F	085	No	Yes	Yes	No	No	No	No	No	Yes	No	No	No	No
37	36	M	082	Yes	No	No	Yes	Yes	No	Yes	No	Yes	No	No	Yes	No
38	35	F	086	Yes	No	Yes	Yes	No	No	No	No	No	No	Yes	Yes	No
39	20	F	088	Yes	No	Yes	No	Yes	No	Yes	No	No	No	Yes	No	No
40	35	M	089	Yes	No	Yes	Yes	No	No	No	No	No	No	No	No	Yes
41	60	F	091	Yes	No	Yes	Yes	No	Yes	No	No	No	No	No	No	No
42	20	F	093	No	Yes	No	Yes	Yes	No	No	No	No	No	No	No	Yes
43	44	F	094	Yes	No	Yes	Yes	No	No	No	Yes	No	Yes	No	No	No
44	62	M	096	On ATP												
45	28	M	098	On ATP												
46	24	F	099	On ATP												
47	31	F	100	On ATP												
48	40	F	102	On ATP												

*Randomized controlled clinical trial to evaluate prophylactic properties of Ayurvedic Treatment Protocol in refractory and chronic migraine patients*

*Project Progress Report*

**Table - 5: Associated Symptoms of Ayurvedic Treatment Group at Day 90**

Sr. No.	Age	Sex	CRF No.	Day 90													
				Nausea	Vomiting	Photophobia	Phonophobia	Fatigue	Blurred Vision	Ear Ache	Tinnitus	Sweats	Heart Burning	Flatus	Belching	Constipation	
1	28	F	001	No	No	No	No	Yes	No	No	No	No	Yes	No	No	No	
2	32	F	003	No	No	Yes	Yes	No	No	No	No	Yes	No	No	Yes	Yes	
3	27	F	004	No	No	No	No	No	No	No	No	No	No	No	No	No	
4	24	F	005	No	No	Yes	No	No	No	No	No	No	No	No	No	No	
5	41	F	006	No	No	No	No	No	Yes	Yes	No	No	Yes	Yes	No	No	
6	38	F	008	No	No	No	No	No	Yes	No	Yes	No	No	No	No	No	
7	46	M	009	Lost to Follow up													
8	36	F	010	No	No	No	No	Yes	No	No	No	No	No	No	No	No	
9	47	F	011	Yes	Yes	No	No	No	No	No	No	No	Yes	No	Yes	No	
10	41	F	015	Yes	No	No	No	No	Yes	No	No	No	No	No	No	No	
11	51	M	016	No	No	Yes	No	No	Yes	No	No	No	No	No	No	No	
12	50	F	024	Yes	No	Yes	No	No	No	No	No	No	No	No	No	No	
13	28	M	029	No	No	Yes	No	No	No	No	No	No	No	No	Yes	No	
14	42	F	031	Lost to Follow up													
15	22	M	036	Lost to Follow up													
16	18	M	039	Yes	No	No	No	No	No	No	No	No	No	No	No	Yes	Yes
17	30	F	047	Yes	No	No	No	No	No	No	No	No	No	No	No	Yes	No
18	26	F	048	Lost to Follow up													
19	27	M	050	Lost to Follow up													
20	40	F	053	Yes	No	No	Yes	No	No	No	No	No	Yes	No	No	No	Yes
21	30	F	055	Yes	No	Yes	No	Yes	No	No	No	Yes	No	No	No	No	Yes
22	39	F	058	Yes	No	Yes	No	Yes	No	No	No	Yes	No	No	No	No	No
23	36	F	059	Yes	No	Yes	No	Yes	No	No	No	No	No	No	No	No	No
24	26	F	060	No	No	No	No	No	No	No	No	Yes	No	No	No	No	No

*Randomized controlled clinical trial to evaluate prophylactic properties of Ayurvedic Treatment Protocol in refractory and chronic migraine patients*

*Project Progress Report*

Sr. No.	Age	Sex	CRF No.	Day 90												
				Nausea	Vomiting	Photophobia	Phonophobia	Fatigue	Blurred Vision	Ear Ache	Tinnitus	Sweats	Heart Burning	Flatus	Belching	Constipation
25	43	F	061	No	No	Yes	No	No	No	No	No	No	No	No	No	Yes
26	25	F	063	No	No	Yes	Yes	No	No	No	No	No	No	No	No	Yes
27	40	M	064	No	Yes	Yes	No	No	No	No	No	No	Yes	No	No	No
28	25	F	066	Yes	No	Yes	No	No	No	No	No	Yes	No	No	No	No
29	40	F	067	Yes	No	Yes	No	No	No	No	No	Yes	No	Yes	No	No
30	50	M	068	Yes	No	No	No	No	No	No	No	No	No	No	Yes	No
31	36	F	069	Yes	No	Yes	No	Yes	No	No	No	No	No	No	No	No
32	44	F	070	Lost to Follow up												
33	26	M	076	Yes	No	Yes	No	Yes	No	No	No	No	No	No	No	No
34	42	M	078	Yes	No	Yes	No	Yes	No	Yes	No	Yes	No	No	No	Yes
35	18	F	080	Yes	No	No	No	No	No	No	No	No	No	No	No	No
36	36	F	085	No	No	Yes	No	No	No	No	No	Yes	No	No	No	No
37	36	M	082	Yes	No	No	No	Yes	No	No	No	Yes	No	No	No	No
38	35	F	086	No	No	Yes	Yes	No	No	No	No	No	No	No	Yes	No
39	20	F	088	No	No	Yes	No	Yes	No	Yes	No	No	No	No	No	No
40	35	M	089	Yes	No	Yes	No	No	No	No	No	No	No	No	No	No
41	60	F	091	Yes	No	No	Yes	No	Yes	No	No	No	No	No	No	No
42	20	F	093	No	Yes	No	Yes	No	No	No	No	No	No	No	No	Yes
43	44	F	094	On ATP												
44	62	M	096	On ATP												
45	28	M	098	On ATP												
46	24	F	099	On ATP												
47	31	F	100	On ATP												
48	40	F	102	On ATP												

*Randomized controlled clinical trial to evaluate prophylactic properties of Ayurvedic Treatment Protocol in refractory and chronic migraine patients*

*Project Progress Report*

**Table - 6: Associated Symptoms of Ayurvedic Treatment Group at Day 120**

Sr. No.	Age	Sex	CRF No.	Day 120												
				Nausea	Vomiting	Photophobia	Phonophobia	Fatigue	Blurred Vision	Ear Ache	Tinnitus	Sweats	Heart Burning	Flatus	Belching	Constipation
1	28	F	001	Yes	No	Yes	Yes	Yes	No	No	No	Yes	No	No	No	No
2	32	F	003	No	No	Yes	No	No	No	No	No	Yes	No	No	Yes	Yes
3	27	F	004	No	No	No	No	No	No	No	No	No	No	No	No	No
4	24	F	005	No	No	Yes	No	No	No	No	No	No	No	No	No	No
5	41	F	006	Yes	No	No	No	No	No	Yes	No	No	No	No	No	No
6	38	F	008	No	No	No	No	No	Yes	No	No	No	No	No	No	No
7	46	M	009	Lost to Follow up												
8	36	F	010	No	No	No	No	No	No	No	No	No	No	No	No	No
9	47	F	011	Yes	No	No	No	No	No	No	No	No	No	No	No	No
10	41	F	015	No	No	No	No	No	No	No	No	No	No	No	No	No
11	51	M	016	No	No	No	No	No	Yes	No	No	No	No	No	No	No
12	50	F	024	Yes	No	Yes	No	No	No	No	No	No	No	No	No	No
13	28	M	029	No	No	Yes	No	No	No	No	No	No	No	No	No	No
14	42	F	031	Lost to Follow up												
15	22	M	036	Lost to Follow up												
16	18	M	039	Yes	No	No	No	No	No	No	No	No	No	No	No	No
17	30	F	047	Yes	No	No	No	No	No	No	No	No	No	No	Yes	No
18	26	F	048	Lost to Follow up												
19	27	M	050	Lost to Follow up												
20	40	F	053	Yes	No	No	Yes	No	No	No	No	No	No	No	No	Yes
21	30	F	055	No	No	Yes	No	Yes	No	No	No	Yes	No	No	No	No
22	39	F	058	No	No	Yes	No	Yes	No	No	No	Yes	No	No	No	No
23	36	F	059	Yes	No	No	No	No	No	No	No	No	No	No	No	No
24	26	F	060	No	No	No	No	No	No	No	No	Yes	No	No	No	No

*Randomized controlled clinical trial to evaluate prophylactic properties of Ayurvedic Treatment Protocol in refractory and chronic migraine patients*

*Project Progress Report*

Sr. No.	Age	Sex	CRF No.	Day 120												
				Nausea	Vomiting	Photophobia	Phonophobia	Fatigue	Blurred Vision	Ear Ache	Tinnitus	Sweats	Heart Burning	Flatus	Belching	Constipation
25	43	F	061	No	No	Yes	No	No	No	No	No	No	No	No	No	No
26	25	F	063	No	No	Yes	No	No	No	No	No	No	No	No	No	Yes
27	40	M	064	No	Yes	Yes	No	No	No	No	No	No	No	No	No	No
28	25	F	066	No	No	Yes	No	No	No	No	No	Yes	No	No	No	No
29	40	F	067	No	No	Yes	No	No	No	No	No	Yes	No	No	No	No
30	50	M	068	Yes	No	No	No	No	No	No	No	No	No	No	No	No
31	36	F	069	Yes	No	No	No	Yes	No	No	No	No	No	No	No	No
32	44	F	070	Lost to Follow up												
33	26	M	076	Yes	No	Yes	No	No	No	No	No	No	No	No	No	No
34	42	M	078	No	No	Yes	No	Yes	No	Yes	No	No	No	No	No	No
35	18	F	080	Yes	No	No	No	No	No	No	No	No	No	No	No	No
36	36	F	085	No	No	Yes	No	No	No	No	No	Yes	No	No	No	No
37	36	M	082	Yes	No	No	No	Yes	No	No	No	No	No	No	No	No
38	35	F	086	No	No	No	Yes	No	No	No	No	No	No	No	No	No
39	20	F	088	No	No	Yes	No	Yes	No	No	No	No	No	No	No	No
40	35	M	089	On ATP												
41	60	F	091	On ATP												
42	20	F	093	On ATP												
43	44	F	094	On ATP												
44	62	M	096	On ATP												
45	28	M	098	On ATP												
46	24	F	099	On ATP												
47	31	F	100	On ATP												
48	40	F	102	On ATP												

*Randomized controlled clinical trial to evaluate prophylactic properties of Ayurvedic Treatment Protocol in refractory and chronic migraine patients*

*Project Progress Report*

**Table - 7: Outcome of ATP**

Sr. No.	CRF No.	Age	Sex	Date of Enrollment	Duration of ATP in days	Status at Day 0	Status at Day 30	Status at Day 60	Status at Day 90	Status at Day 120	Status at Day 150	Status at Day 180	Status at Day 360
1	001	28	F	29-May-12	120 Days	Severe Pain with need of medication	Severe Pain with need of medication	Moderate pain with need of medication	Moderate pain with need of medication	Mild pain with no need of medication	Symptom Free	Symptom Free	Symptom Free
2	003	32	F	13-Jul-12	120 Days	Severe Pain with need of medication	Severe Pain with need of medication	Moderate pain with need of medication	Moderate pain with need of medication	Mild pain with no need of medication	Mild pain with no need of medication	Mild pain with no need of medication	Mild pain with no need of medication
3	004	27	F	13-Jul-12	120 Days	Severe Pain with need of medication	Severe Pain with need of medication	Moderate pain with need of medication	Moderate pain with need of medication	Mild pain with no need of medication	Symptom Free	Symptom Free	Symptom Free
4	005	24	F	13-Jul-12	120 Days	Moderate pain with need of medication	Moderate pain with need of medication	Moderate pain with need of medication	Moderate pain with need of medication	Symptom Free	Symptom Free	Symptom Free	Symptom Free
5	006	41	F	13-Jul-12	120 Days	Severe Pain with need of medication	Severe Pain with need of medication	Moderate pain with need of medication	Moderate pain with need of medication	Mild pain with no need of medication	Mild pain with no need of medication	Mild pain with no need of medication	Symptom Free
6	008	38	F	1-Aug-12	120 Days	Moderate pain with need of medication	Moderate pain with need of medication	Moderate pain with need of medication	Moderate pain with need of medication	Mild pain with no need of medication	Mild pain with no need of medication	Symptom Free	Symptom Free
7	009	46	M	1-Aug-12	30 days	Moderate pain with need of medication	LTF	LTF	LTF	LTF	LTF	LTF	LTF
8	010	36	F	1-Aug-12	120 Days	Severe Pain with need of medication	Moderate pain with need of medication	Moderate pain with need of medication	Moderate pain with need of medication	Mild pain with no need of medication	Mild pain with no need of medication	Mild pain with no need of medication	Mild pain with no need of medication
9	011	47	F	1-Aug-12	120 Days	Severe Pain with need of medication	Severe Pain with need of medication	Severe Pain with need of medication	Moderate pain with need of medication	Mild pain with no need of medication	Mild pain with no need of medication	Mild pain with no need of medication	Mild pain with no need of medication
10	015	41	F	1-Oct-12	120 Days	Moderate pain with need of medication	Moderate pain with need of medication	Moderate pain with need of medication	Mild pain with no need of medication	Symptom Free	Symptom Free	Symptom Free	Symptom Free
11	016	51	M	26-Oct-12	120 Days	Severe Pain with need of medication	Moderate pain with need of medication	Moderate pain with need of medication	Moderate pain with need of medication	Mild pain with no need of medication	Mild pain with no need of medication	Mild pain with no need of medication	Symptom Free
12	024	50	F	11-Feb-13	120 Days	Severe Pain with need of medication	Severe Pain with need of medication	Moderate pain with need of medication	Moderate pain with need of medication	Mild pain with no need of medication	Mild pain with no need of medication	Mild pain with no need of medication	Symptom Free
13	029	28	M	20-Apr-13	120 Days	Moderate pain with need of medication	Moderate pain with need of medication	Moderate pain with need of medication	Moderate pain with need of medication	Mild pain with no need of medication	Mild pain with no need of medication	Mild pain with no need of medication	Symptom Free
14	031	42	F	1-May-13	30 days	Moderate pain with need of medication	LTF	LTF	LTF	LTF	LTF	LTF	LTF
15	036	22	M	15-Jun-13	30 days	Moderate pain with need of medication	LTF	LTF	LTF	LTF	LTF	LTF	LTF
16	039	18	M	10-Jul-13	30 days	Moderate pain with need of medication	LTF	LTF	LTF	LTF	LTF	LTF	LTF

*Randomized controlled clinical trial to evaluate prophylactic properties of Ayurvedic Treatment Protocol in refractory and chronic migraine patients*



## *Project Progress Report*

Sr. No.	CRF No.	Age	Sex	Date of Enrollment	Duration of ATP in days	Status at Day 0	Status at Day 30	Status at Day 60	Status at Day 90	Status at Day 120	Status at Day 150	Status at Day 180	Status at Day 360
17	047	30	F	4-Sep-13	120 Days	Severe Pain with need of medication	Moderate pain with need of medication	Moderate pain with need of medication	Moderate pain with need of medication	Mild pain with no need of medication	Mild pain with no need of medication	Mild pain with no need of medication	Mild pain with no need of medication
18	048	26	F	14-Sep-13	30 days	Severe Pain with need of medication	LTF	LTF	LTF	LTF	LTF	LTF	LTF
19	050	27	M	18-Sep-13	30 days	Moderate pain with need of medication	LTF	LTF	LTF	LTF	LTF	LTF	LTF
20	053	40	F	5-Oct-13	120 Days	Severe Pain with need of medication	Moderate pain with need of medication	Moderate pain with need of medication	Moderate pain with need of medication	Mild pain with no need of medication	Symptom Free	Symptom Free	Symptom Free
21	055	30	F	16-Oct-13	120 Days	Severe Pain with need of medication	Moderate pain with need of medication	Moderate pain with need of medication	Moderate pain with need of medication	Mild pain with no need of medication	Mild pain with no need of medication	Symptom Free	Symptom Free
22	058	39	F	6-Nov-13	120 Days	Moderate pain with need of medication	Moderate pain with need of medication	Moderate pain with need of medication	Moderate pain with need of medication	Mild pain with no need of medication	Mild pain with no need of medication	Mild pain with no need of medication	Treatment Completed
23	059	36	F	9-Nov-13	120 Days	Moderate pain with need of medication	Moderate pain with need of medication	Moderate pain with need of medication	Mild pain with need of medication	Mild pain with no need of medication	Mild pain with no need of medication	Symptom Free	Treatment Completed
24	060	26	F	9-Nov-13	120 Days	Severe Pain with need of medication	Severe Pain with need of medication	Moderate pain with need of medication	Moderate pain with need of medication	Mild pain with no need of medication	Mild pain with no need of medication	Mild pain with no need of medication	Treatment Completed
25	061	43	F	13-Nov-13	120 Days	Severe Pain with need of medication	Moderate pain with need of medication	Moderate pain with need of medication	Moderate pain with need of medication	Mild pain with no need of medication	Mild pain with no need of medication	Mild pain with no need of medication	Treatment Completed
26	063	25	F	4-Dec-13	120 Days	Severe Pain with need of medication	Severe Pain with need of medication	Moderate pain with need of medication	Moderate pain with need of medication	Mild pain with no need of medication	Mild pain with no need of medication	Mild pain with no need of medication	Treatment Completed
27	064	40	M	4-Dec-13	120 Days	Severe Pain with need of medication	Severe Pain with need of medication	Moderate pain with need of medication	Moderate pain with need of medication	Mild pain with no need of medication	Mild pain with no need of medication	Symptom Free	Symptom Free
28	066	25	F	11-Dec-13	120 Days	Moderate pain with need of medication	Moderate pain with need of medication	Moderate pain with need of medication	Moderate pain with need of medication	Mild pain with no need of medication	Mild pain with no need of medication	Mild pain with no need of medication	Treatment Completed
29	067	40	F	11-Dec-13	120 Days	Moderate pain with need of medication	Moderate pain with need of medication	Moderate pain with need of medication	Mild pain with need of medication	Mild pain with no need of medication	Symptom Free	Symptom Free	Treatment Completed
30	068	50	M	18-Dec-13	120 Days	Severe Pain with need of medication	Moderate pain with need of medication	Moderate pain with need of medication	Moderate pain with need of medication	Mild pain with no need of medication	Mild pain with no need of medication	Treatment Completed	Treatment Completed
31	069	36	F	28-Dec-13	120 Days	Severe Pain with need of medication	Severe Pain with need of medication	Severe Pain with need of medication	Moderate pain with need of medication	Mild pain with no need of medication	Mild pain with no need of medication	Treatment Completed	Treatment Completed
32	070	44	F	28-Dec-13	120 Days	Severe Pain with need of medication	LTF	LTF	LTF	LTF	LTF	LTF	LTF

*Randomized controlled clinical trial to evaluate prophylactic properties of Ayurvedic Treatment Protocol in refractory and chronic migraine patients*

## *Project Progress Report*

Sr. No.	CRF No.	Age	Sex	Date of Enrollment	Duration of ATP in days	Status at Day 0	Status at Day 30	Status at Day 60	Status at Day 90	Status at Day 120	Status at Day 150	Status at Day 180	Status at Day 360
33	076	26	M	21-Jun-14	120 Days	Severe Pain with need of medication	Severe Pain with need of medication	Severe Pain with need of medication	Moderate pain with need of medication	Moderate pain with need of medication	Moderate pain with need of medication	Mild pain with no need of medication	Treatment Completed
34	078	42	M	25-Jun-14	120 Days	Severe Pain with need of medication	Severe Pain with need of medication	Severe Pain with need of medication	Moderate pain with need of medication	Moderate pain with need of medication	Moderate pain with need of medication	Mild pain with no need of medication	Treatment Completed
35	080	18	F	11-Jun-14	120 Days	Severe Pain with need of medication	Severe Pain with need of medication	Severe Pain with need of medication	Severe Pain with need of medication	Moderate pain with need of medication	Moderate pain with need of medication	Rescue	Rescue
36	085	36	F	12-Jul-14	120 Days	Severe Pain with need of medication	Severe Pain with need of medication	Severe Pain with need of medication	Moderate pain with need of medication	Moderate pain with need of medication	Moderate pain with need of medication	Mild pain with no need of medication	Rescue
37	082	36	M	30-Jul-14	120 Days	Severe Pain with need of medication	Severe Pain with need of medication	Severe Pain with need of medication	Severe Pain with need of medication	Moderate pain with need of medication	Moderate pain with need of medication	Rescue	Rescue
38	086	35	F	13-Aug-14	120 Days	Severe Pain with need of medication	Severe Pain with need of medication	Severe Pain with need of medication	Moderate pain with need of medication	Moderate pain with need of medication	Moderate pain with need of medication	Treatment Completed	Treatment Completed
39	088	20	F	27-Aug-14	120 Days	Severe Pain with need of medication	Severe Pain with need of medication	Moderate pain with need of medication	Moderate pain with need of medication	Moderate pain with need of medication	Rescue	Rescue	Rescue
40	089	35	M	13-Sep-14	90 Days	Severe Pain with need of medication	Moderate pain with need of medication	Moderate pain with need of medication	Moderate pain with need of medication	On ATP	On ATP	On ATP	On ATP
41	091	60	F	17-Sep-14	90 Days	Severe Pain with need of medication	Severe Pain with need of medication	Severe Pain with need of medication	Severe Pain with need of medication	On ATP	On ATP	On ATP	On ATP
42	093	20	F	24-Sep-14	90 Days	Severe Pain with need of medication	Severe Pain with need of medication	Moderate pain with need of medication	Moderate pain with need of medication	On ATP	On ATP	On ATP	On ATP
43	094	44	F	15-Oct-14	60 Days	Severe Pain with need of medication	Severe Pain with need of medication	Severe Pain with need of medication	On ATP	On ATP	On ATP	On ATP	On ATP
44	096	62	M	12-Nov-14	30 Days	Severe Pain with need of medication	Severe Pain with need of medication	On ATP	On ATP	On ATP	On ATP	On ATP	On ATP
45	098	28	M	15-Nov-14	30 Days	Severe Pain with need of medication	Severe Pain with need of medication	On ATP	On ATP	On ATP	On ATP	On ATP	On ATP
46	099	24	F	29-Nov-14	30 Days	Severe Pain with need of medication	On ATP	On ATP	On ATP	On ATP	On ATP	On ATP	On ATP
47	100	31	F	3-Dec-14	30 Days	Severe Pain with need of medication	On ATP	On ATP	On ATP	On ATP	On ATP	On ATP	On ATP
48	102	40	F	17-Dec-14	30 Days	Severe Pain with need of medication	On ATP	On ATP	On ATP	On ATP	On ATP	On ATP	On ATP

*Randomized controlled clinical trial to evaluate prophylactic properties of Ayurvedic Treatment Protocol in refractory and chronic migraine patients*

*Project Progress Report*

**Table - 8: Changes in VAS and MIDAS after receiving ATP**

Sr. No.	CRF No.	Age	Sex	VAS		MIDAS		No. of headache days in last 90 days	
				Pre-ATP	Post-ATP	Pre-ATP	Post-ATP	Pre-ATP	Post-ATP
1	001	28	F	8	2	20	4	90	4
2	003	32	F	8	3	55	10	90	15
3	004	27	F	8	0	50	0	60	5
4	005	24	F	8	3	22	3	90	5
5	006	41	F	9	2	30	7	36	6
6	008	38	F	7	2	22	5	30	5
7	009	46	M	7	LTF	47	LTF	90	LTF
8	010	36	F	8	3	53	16	45	10
9	011	47	F	9	2	40	12	90	7
10	015	41	F	8	0	28	2	36	6
11	016	51	M	9	2	28	3	60	10
12	024	50	F	8	1	41	12	66	12
13	029	28	M	7	0	57	9	33	15
14	031	42	F	8	LTF	39	LTF	39	LTF
15	036	22	M	8	LTF	27	LTF	43	LTF
16	039	18	M	7	LTF	41	LTF	36	LTF
17	047	30	F	9	3	38	10	90	7
18	048	26	F	9	LTF	48	LTF	39	LTF
19	050	27	M	8	LTF	35	LTF	30	LTF
20	053	40	F	9	3	52	7	65	5
21	055	30	F	9	3	47	6	60	5
22	058	39	F	8	3	37	5	90	10
23	059	36	F	7	2	52	10	45	4
24	060	26	F	9	3	39	10	36	5

*Randomized controlled clinical trial to evaluate prophylactic properties of Ayurvedic Treatment Protocol in refractory and chronic migraine patients*

*Project Progress Report*

Sr. No.	CRF No.	Age	Sex	VAS		MIDAS		No. of headache days in last 90 days	
				Pre-ATP	Post-ATP	Pre-ATP	Post-ATP	Pre-ATP	Post-ATP
25	061	43	F	8	3	50	9	60	6
26	063	25	F	10	3	47	5	45	4
27	064	40	M	9	2	43	4	33	4
28	066	25	F	8	3	37	4	66	7
29	067	40	F	7	2	34	4	35	3
30	068	50	M	8	3	30	6	45	8
31	069	36	F	9	3	29	6	90	12
32	070	44	F	9	LTF	45	LTF	90	LTF
33	076	26	M	7	3	38	10	30	10
34	078	42	M	8	3	44	12	60	12
35	080	18	F	8	4	50	11	60	8
36	085	36	F	9	5	55	30	65	15
37	082	36	M	10	6	46	19	90	12
38	086	35	F	9	7	39	22	75	10
39	088	20	F	8	5	45	23	48	8
40	089	35	M	7	On ATP	40	On ATP	75	On ATP
41	091	60	F	9	On ATP	58	On ATP	90	On ATP
42	093	20	F	8	On ATP	47	On ATP	50	On ATP
43	094	44	F	9	On ATP	57	On ATP	66	On ATP
44	096	62	M	8	On ATP	48	On ATP	45	On ATP
45	098	28	M	9	On ATP	52	On ATP	60	On ATP
46	099	24	F	7	On ATP	43	On ATP	35	On ATP
47	100	31	F	8	On ATP	47	On ATP	60	On ATP
48	102	40	F	8	On ATP	45	On ATP	45	On ATP

*Randomized controlled clinical trial to evaluate prophylactic properties of Ayurvedic Treatment Protocol in refractory and chronic migraine patients*

*Project Progress Report*

**Table – 9: Baseline Disease Characteristics of Conventional Treatment Group**

Sr. No	Age	Sex	CRF No.	History (in years)	Frequency	Symptoms				VAS	MIDAS	No. of Headache days (Day0)	Relieving Factors
						Nausea	Vomiting	Photophobia	Phonophobia	Day 0	Day 0		
1	47	F	002	17	>4 times a month	√	√	√	√	10	40	90	Sleep, Painkiller
2	39	F	007	20	>4 times a month	√	√	√	√	9	37	90	Sleep, Painkiller
3	46	F	012	20	2-4 times a month	x	x	√	√	6	40	45	Sleep, Painkiller
4	40	F	013	6	2-4 times a month	√	√	√	√	5	16	30	Sleep, Painkiller
5	27	M	014	1.5	>4 times a month	√	√	√	√	8	55	90	Sleep
6	35	F	017	7	>4 times a month	√	√	√	√	9	42	60	Sleep, Exhilaration, Painkiller
7	33	F	018	5	2-4 times a month	√	x	√	√	8	25	50	Painkiller, Exhilaration
8	38	F	019	7	>4 times a month	√	√	√	√	9	32	45	Sleep, Painkiller
9	42	F	020	8	>4 times a month	√	x	√	√	8	24	60	Sleep, Painkiller
10	35	F	021	4	>4 times a month	√	√	√	√	8	28	60	Sleep
11	40	F	022	3	2-4 times a month	√	√	√	x	7	30	30	Sleep, Painkiller
12	45	F	023	6	>4 times a month	√	√	√	√	8	25	45	Painkiller
13	52	F	025	12	>4 times a month	√	√	√	√	9	25	90	Sleep, Painkiller
14	35	F	026	2	>4 times a month	x	√	√	√	9	34	60	Sleep, Pain Killer, Pregnancy
15	54	F	027	7	>4 times a month	√	√	√	√	8	32	75	Sleep, Exhilaration, Painkiller
16	21	M	028	1	>4 times a month	x	x	√	√	9	40	60	Sleep, Painkiller
17	33	F	030	3	2-4 times a month	√	√	x	√	8	38	75	Sleep, Exhilaration, Painkiller
18	32	F	032	1	2-4 times a month	√	√	x	x	9	43	45	Sleep

*Randomized controlled clinical trial to evaluate prophylactic properties of Ayurvedic Treatment Protocol in refractory and chronic migraine patients*

*Project Progress Report*

Sr. No	Age	Sex	CRF No.	History (in years)	Frequency	Symptoms				VAS	MIDAS	No. of Headache days (Day0)	Relieving Factors
						Nausea	Vomiting	Photophobia	Phonophobia	Day 0	Day 0		
19	28	M	033	5	>4 times a month	√	√	√	√	9	37	90	Painkiller, Exhilaration
20	20	M	034	1	2-4 times a month	√	x	√	x	8	32	30	Sleep, Painkiller
21	43	M	035	6	>4 times a month	√	√	√	√	9	25	60	Sleep, Exhilaration, Painkiller
22	38	M	037	3	>4 times a month	√	√	√	√	9	39	36	Sleep, Exhilaration, Painkiller
23	30	F	038	4	>4 times a month	√	√	√	√	8	25	40	Sleep, Painkiller
24	31	F	040	6	2-4 times a month	√	√	√	x	7	35	45	Sleep, Pain Killer, Pregnancy
25	33	M	041	5	2-4 times a month	√	x	√	√	8	50	60	Sleep, Painkiller
26	45	F	042	8	>4 times a month	√	√	√	√	9	40	50	Sleep, Exhilaration, Painkiller
27	48	F	043	7	>4 times a month	√	√	√	√	8	40	30	Sleep, Painkiller
28	27	F	044	4	>4 times a month	√	√	√	√	9	31	45	Painkiller
29	23	F	045	7	2-4 times a month	√	√	√	√	9	25	33	Sleep, Painkiller
30	50	M	046	5	>4 times a month	√	x	√	√	8	36	45	Sleep, Painkiller
31	30	F	049	2	2-4 times a month	√	√	√	x	7	43	50	Sleep, Exhilaration, Painkiller
32	35	F	051	1	>4 times a month	√	√	√	√	9	29	60	Sleep, Painkiller
33	30	F	052	4	2-4 times a month	x	√	√	√	8	32	60	Sleep, Pain Killer, Pregnancy
34	37	M	054	3	>4 times a month	√	√	x	√	8	40	90	Sleep, Exhilaration, Painkiller
35	28	F	056	3	>4 times a month	√	√	√	√	9	27	60	Sleep, Painkiller
36	18	M	057	1	2-4 times a month	√	√	√	x	8	48	45	Painkiller

*Randomized controlled clinical trial to evaluate prophylactic properties of Ayurvedic Treatment Protocol in refractory and chronic migraine patients*

*Project Progress Report*

Sr. No	Age	Sex	CRF No.	History (in years)	Frequency	Symptoms				VAS	MIDAS	No. of Headache days (Day0)	Relieving Factors
						Nausea	Vomiting	Photophobia	Phonophobia	Day 0	Day 0		
37	45	M	062	8	>4 times a month	√	√	√	√	8	36	50	Sleep, Painkiller
38	18	F	065	1	>4 times a month	√	√	√	√	8	31	60	Sleep, Painkiller
39	22	M	071	3	>4 times a month	√	x	√	√	8	42	36	Painkiller
40	46	F	072	6	2-4 times a month	√	√	√	√	9	38	35	Sleep, Exhilaration, Painkiller
41	28	M	073	2	2-4 times a month	x	√	√	x	8	45	48	Painkiller
42	42	F	074	7	>4 times a month	√	√	√	x	7	28	60	Sleep, Painkiller
43	28	F	075	4	>4 times a month	x	√	√	√	8	37	50	Sleep
44	35	F	077	8	>4 times a month	√	x	√	√	7	34	65	Sleep, Painkiller
45	28	F	079	2	>4 times a month	√	√	√	√	9	44	72	Sleep, Painkiller
46	55	F	081	10	2-4 times a month	√	√	√	√	9	53	60	Sleep
47	43	F	083	1	>4 times a month	x	√	√	x	8	38	50	Painkiller
48	28	F	084	2	>4 times a month	√	x	√	√	8	45	50	Sleep, Painkiller
49	31	F	087	5	>4 times a month	√	√	√	√	9	50	75	Sleep, Exhilaration
50	25	F	090	1	>4 times a month	√	x	√	x	8	45	60	Sleep, Exhilaration, Painkiller
51	25	F	092	1.5	2-4 times a month	x	√	√	√	8	47	60	Sleep
52	34	F	095	5	>4 times a month	√	√	√	√	7	32	90	Sleep, Painkiller
53	45	F	097	2	2-4 times a month	√	x	√	x	8	42	45	Painkiller, Exhilaration
54	25	F	101	1	>4 times a month	√	x	√	√	8	45	55	Sleep, Painkiller

*Randomized controlled clinical trial to evaluate prophylactic properties of Ayurvedic Treatment Protocol in refractory and chronic migraine patients*

*Project Progress Report*

**Table 10: Details of Conventional Treatment**

S. No.	Age	Sex	CRF No.	Details of Conventional Treatment					
				Prophylaxis			Rescue		
				Name	Dose	Frequency	Name	Dose	Frequency
1	47	F	002	Propranolol Verapamil Divalproex Naproxen	20 mg 120mg 750 mg 250 mg	bid bid bid bid	Amitriptyline Flunarizine Rizatriptan	20 mg 10 mg 5 mg	od bid bid
2	39	F	007	Amitriptyline Naproxen Flunarizine	15 mg 250 mg 20 mg	od bid tid	Propranolol Naproxen + Domeperidone	40 mg 500 mg + 10 mg	bid od
3	46	F	012	Propranolol Flunarizine Sumatriptan	30 mg 40 mg 25 mg	bid bid od	Amitriptyline Naproxen + Domeperidone	25 mg 500 mg + 10 mg	od od
4	40	F	013	Amitriptyline Flunarizine Naproxen	10 mg 10 mg 250 mg	od tid bid	Propranolol Flunarizine Rizatriptan	40 mg 10 mg 5 mg	bid bid od
5	27	M	014	Propranolol Flunarizine Rizatriptan	10 mg 10 mg 5 mg	bid tid bid	Propranolol Naproxen + Domeperidone	40 mg 500 mg + 10 mg	bid od
6	35	F	017	Propranolol Verapamil Tizanidine Amitriptyline	30 mg 120 mg 6 mg 10 mg	bid od od od	Topiramate Naproxen + Domeperidone	50 mg 500 mg + 10 mg	bid od
7	33	F	018	Propranolol Flunarizine Domeperidone Naproxen	40 mg 10 mg 10 mg 250 mg	bid bid od bid	Divalproex Flunarizine Naproxen + Domeperidone	500 mg 10 mg 250 mg + 10 mg	tid bid bid
8	38	F	019	Topiramate Divalproex Methysergide Naproxen	50 mg 500 mg 2 mg 250 mg	bid tid bid bid	Amitriptyline Naproxen + Domeperidone	25 mg 500 mg + 10 mg	od od
9	42	F	020	Amitriptyline Naproxen Domeperidone Tizanidine	15 mg 250 mg 10 mg 2 mg	od bid od od	Propranolol Naproxen Sumatriptan	40 mg 250 mg 25 mg	bid bid od
10	35	F	021	Propranolol Amitriptyline Rizatriptan	25 mg 10mg 10	bid bid bid	Propranolol Naproxen + Domeperidone	40 mg 500 mg + 10 mg	bid od
11	40	F	022	Topiramate Propranolol Methysergide Rizatriptan	25 mg 10 mg 4 mg 15 mg	bid bid od od	Divalproex Flunarizine Naproxen + Domeperidone	750 mg 10 mg 250 mg + 10 mg	bid bid bid
12	45	F	023	Topiramate Verapamil Naproxen Divalproex	20 mg 150 mg 500 mg 750 mg	bid od od bid	Propranolol Naproxen + Domeperidone	50 mg 500 mg + 10 mg	bid od
13	52	F	025	Propranolol Verapamil Naproxen	50 mg 150 mg 250 mg	bid od bid	Amitriptyline Naproxen + Domeperidone	25 mg 500 mg + 10 mg	od od
14	35	F	026	Amitriptyline Propranolol Rizatriptan	15 mg 20 mg 20 mg	bid bid bid	Propranolol Naproxen	50 mg 250 mg	bid bid

*Randomized controlled clinical trial to evaluate prophylactic properties of Ayurvedic Treatment Protocol in refractory and chronic migraine patients*



*Project Progress Report*

S. No.	Age	Sex	CRF No.	Details of Conventional Treatment					
				Prophylaxis			Rescue		
				Name	Dose	Frequency	Name	Dose	Frequency
15	54	F	027	Propranolol Flunarizine Sumatriptan Domeperidone Naproxen	30 mg 40 mg 25 mg 5 mg 250 mg	bid bid od od bid	Topiramate Naproxen + Domeperidone	20 mg 250 mg + 10 mg	bid bid
16	21	M	028	Divalproex Tizanidine Methysergide Amitriptyline	500 mg 2 mg 2 mg 10 mg	bid bid bid od	Propranolol Naproxen + Domeperidone	40 mg 500 mg + 10 mg	bid od
17	33	F	030	Propranolol Verapamil Amitriptyline Tizanidine	25 mg 140 mg 10 mg 3 mg	bid od bid bid	Divalproex Flunarizine Naproxen + Domeperidone	500 mg 10 mg 250 mg + 10 mg	tid bid bid
18	32	F	032	Propranolol Flunarizine Sumatriptan Naproxen	20 mg 30 mg 25 mg 250 mg	bid bid od bid	Divalproex Flunarizine Naproxen + Domeperidone	750 mg 10 mg 250 mg + 10 mg	bid bid bid
19	28	M	033	Divalproex Tizanidine Amitriptyline Rizatriptan	500 mg 2 mg 10 mg 5 mg	bid bid od bid	Amitriptyline Naproxen + Domeperidone	25 mg 500 mg + 10 mg	od od
20	20	M	034	Amitriptyline Methysergide Topiramate Naproxen	10 mg 2 mg 20 mg 250 mg	bid od bid bid	Propranolol Naproxen + Domeperidone	40 mg 500 mg + 10 mg	bid od
21	43	M	035	Amitriptyline Naproxen Flunarizine	10 mg 500 mg 15 mg	od od tid	Propranolol Naproxen	20 mg 250 mg	bid bid
22	38	M	037	Propranolol Verapamil Divalproex Naproxen	20 mg 120 mg 750 mg 250 mg	bid od bid bid	Topiramate Naproxen + Domeperidone	20 mg 250 mg + 10 mg	bid bid
23	30	F	038	Propranolol Flunarizine Rizatriptan	10 mg 10 mg 10 mg	bid tid bid	Amitriptyline Flunarizine Naproxen	20 mg 20 mg 250 mg	od tid bid
24	31	F	040	Amitriptyline Propranolol Rizatriptan	10 mg 50 mg 15 mg	od bid bid	Divalproex Flunarizine Naproxen + Domeperidone	500 mg 10 mg 250 mg + 10 mg	tid bid bid
25	33	M	041	Amitriptyline Flunarizine Naproxen	20 mg 20 mg 250 mg	od tid bid	Propranolol Naproxen	40 mg 250 mg	bid bid
26	45	F	042	Topiramate Verapamil Naproxen Rizatriptan	25mg 150 mg 500 mg 5mg	bid od bid od	Amitriptyline Flunarizine Naproxen + Domeperidone	20 mg 20 mg 250 mg + 10 mg	od tid bid
27	48	F	043	Propranolol Verapamil Divalproex Naproxen	20 mg 120 mg 750 mg 250 mg	bid od bid bid	Amitriptyline Flunarizine Rizatriptan	20 mg 10 mg 5 mg	od bid bid
28	27	F	044	Amitriptyline Rizatriptan Topiramate	10 mg 10 mg 50 mg	od bid bid	Propranolol Naproxen	40 mg 250 mg	bid bid

*Randomized controlled clinical trial to evaluate prophylactic properties of Ayurvedic Treatment Protocol in refractory and chronic migraine patients*

*Project Progress Report*

S. No.	Age	Sex	CRF No.	Details of Conventional Treatment					
				Prophylaxis			Rescue		
				Name	Dose	Frequency	Name	Dose	Frequency
29	23	F	045	Propranolol	10 mg	bid	Topiramate	25 mg	bid
				Naratriptan	2 mg	od	Naproxen + Domeperidone	500 mg + 10 mg	od
				Amitriptyline	15 mg	od			
				Flunarizine	20 mg	bid			
30	50	M	046	Topiramate	20 mg	bid	Amitriptyline	15 mg	od
				Verapamil	120 mg	od	Flunarizine	10 mg	bid
				Naproxen	250 mg	bid	Rizatriptan	5 mg	bid
31	30	F	049	Amitriptyline	10 mg	od	Topiramate	25 mg	bid
				Propranolol	40 mg	od	Naproxen + Domeperidone	500 mg + 10 mg	od
				Naproxen	250 mg	bid			
32	35	F	051	Topiramate	25 mg	od	Propranolol	40 mg	bid
				Amitriptyline	10 mg	od	Naproxen + Domeperidone	500 mg + 10 mg	od
				Rizatriptan	5 mg	bid			
33	30	F	052	Amitriptyline	25 mg	od	Topiramate	20 mg	bid
				Flunarizine	10 mg	od	Naproxen + Domeperidone	250 mg + 10 mg	bid
				Rizatriptan	10 mg	od			
				Naproxen	500 mg	od			
34	37	M	054	Propranolol	25 mg	od	Amitriptyline	15 mg	od
				Flunarizine	10 mg	bid	Flunarizine	20 mg	tid
				Rizatriptan	5 mg	bid	Naproxen + Domeperidone	250 mg + 10 mg	bid
35	28	F	056	Divalproex	500 mg	bid	Propranolol	10 mg	bid
				Tizanidine	2 mg	bid	Rizatriptan	10 mg	bid
				Methysergide	2 mg	od	Naproxen	250 mg	bid
				Amitriptyline	15mg	od			
36	18	M	057	Propranolol	10 mg	bid	Divalproex	500 mg	tid
				Naratriptan	4 mg	od	Flunarizine	10 mg	bid
				Amitriptyline	10 mg	od	Naproxen + Domeperidone	250 mg + 10 mg	bid
37	45	M	062	Propranolol	15 mg	bid	Amitriptyline	15 mg	od
				Verapamil	120 mg	bid	Naproxen + Domeperidone	500 mg + 10 mg	od
				Naproxen	250 mg	bid			
				Flunarizine	10 mg	od			
38	18	F	065	Amitriptyline	20 mg	od	Propranolol	30 mg	bid
				Flunarizine	10 mg	od	Rizatriptan	10 mg	od
				Rizatriptan	5 mg	od			
39	22	M	071	Divalproex	500 mg	bid	Propranolol	10 mg	bid
				Tizanidine	2 mg	bid	Rizatriptan	10 mg	bid
				Methysergide	2 mg	od	Naproxen	250 mg	bid
				Amitriptyline	15mg	od			
40	46	F	072	Propranolol	20 mg	bid	Amitriptyline	20 mg	od
				Verapamil	120 mg	od	Flunarizine	10 mg	bid
				Divalproex	750 mg	bid	Rizatriptan	5 mg	bid
				Naproxen	250 mg	bid			
41	28	M	073	Amitriptyline	20 mg	od	Propranolol	40 mg	bid
				Flunarizine	20 mg	tid	Naproxen	250 mg	bid
				Naproxen	250 mg	bid			
42	42	F	074	Topiramate	25 mg	bid	Divalproex	750 mg	bid
				Propranolol	10 mg	bid	Flunarizine	10 mg	bid
				Methysergide	4 mg	od	Naproxen + Domeperidone	250 mg + 10 mg	bid
				Rizatriptan	15 mg	od			

*Randomized controlled clinical trial to evaluate prophylactic properties of Ayurvedic Treatment Protocol in refractory and chronic migraine patients*

*Project Progress Report*

S. No.	Age	Sex	CRF No.	Details of Conventional Treatment					
				Prophylaxis			Rescue		
				Name	Dose	Frequency	Name	Dose	Frequency
43	28	F	075	Propranolol Flunarizine Domeperidone Naproxen	40 mg 10 mg 10 mg 250 mg	bid bid od bid	Divalproex Flunarizine Naproxen + Domeperidone	500 mg 10 mg 250 mg + 10 mg	tid bid bid
44	35	F	077	Amitriptyline Propranolol Rizatriptan	10 mg 50 mg 15 mg	od bid bid	Divalproex Flunarizine Naproxen + Domeperidone	500 mg 10 mg 250 mg + 10 mg	tid bid bid
45	28	F	079	Divalproex Tizanidine Methysergide Amitriptyline	500 mg 2 mg 2 mg 15mg	bid bid od od	Propranolol Rizatriptan Naproxen	10 mg 10 mg 250 mg	bid bid bid
46	55	F	081	Propranolol Verapamil Naproxen	50 mg 150 mg 500 mg	bid od od	Amitriptyline Naproxen + Domeperidone	25 mg 500 mg + 10 mg	od od
47	43	F	083	Topiramate Naproxen + Domeperidone	25 mg 250 mg + 10 mg	bid bid	Divalproex Rizatriptan Naproxen	500 mg 10 mg 250 mg	bid bid bid
48	28	F	084	Divalproex Tizanidine Amitriptyline	500 mg 2 mg 15mg	bid bid od	Propranolol Naproxen Sumatriptan	40 mg 250 mg 25 mg	bid bid od
49	31	F	087	Propranolol Naratriptan Naproxen	10 mg 4 mg 500 mg	bid od od	Amitriptyline Flunarizine Naproxen + Domeperidone	15 mg 20 mg 250 mg + 10 mg	od tid bid
50	25	F	090	Divalproex Tizanidine Methysergide Amitriptyline	750 mg 2 mg 2 mg 15mg	bid bid od od	Propranolol Naproxen + Domeperidone Rizatriptan	40 mg 500 mg + 10 mg 5 mg	bid od bid
51	25	F	092	Propranolol Flunarizine Domeperidone Naproxen	50 mg 10 mg 10 mg 500 mg	bid bid od od	Amitriptyline Flunarizine Naproxen + Domeperidone	20 mg 20 mg 250 mg + 10 mg	od tid bid
52	34	F	095	Propranolol Verapamil Naproxen Flunarizine	15 mg 120 mg 250 mg 10 mg	bid bid bid od	Amitriptyline Naproxen + Domeperidone Rizatriptan	20 mg 500 mg + 10 mg 5 mg	od od bid
53	45	F	097	Amitriptyline Naproxen Domeperidone	15 mg 250 mg 10 mg	od bid od	Propranolol Naproxen Sumatriptan	40 mg 250 mg 25 mg	bid bid od
54	25	F	101	Amitriptyline Flunarizine Rizatriptan Naproxen	15mg 10 mg 10 mg 500 mg	od od od od	Topiramate Naproxen + Domeperidone	20 mg 250 mg + 10 mg	bid bid

*Randomized controlled clinical trial to evaluate prophylactic properties of Ayurvedic Treatment Protocol in refractory and chronic migraine patients*

*Project Progress Report*

**Table - 11: Associated Symptoms of Conventional Treatment Group at Day 0**

Sr. No	Age	Sex	CRF No.	Day 0												
				Nausea	Vomiting	Photophobia	Phonophobia	Fatigue	Blurred Vision	Ear Ache	Tinnitus	Sweats	Heart Burning	Flatus	Belching	Constipation
1	47	F	002	Yes	No	Yes	Yes	Yes	No	Yes	Yes	Yes	No	Yes	Yes	Yes
2	39	F	007	Yes	Yes	Yes	Yes	Yes	Yes	Yes	Yes	Yes	No	Yes	Yes	Yes
3	46	F	012	No	No	Yes	Yes	Yes	Yes	No	No	No	No	No	Yes	Yes
4	40	F	013	Yes	Yes	Yes	Yes	Yes	No	No	No	Yes	No	No	Yes	No
5	27	M	014	Yes	Yes	Yes	Yes	Yes	No	No	No	Yes	Yes	Yes	Yes	No
6	35	F	017	Yes	Yes	Yes	Yes	Yes	Yes	No	No	Yes	No	No	Yes	Yes
7	33	F	018	Yes	No	Yes	Yes	Yes	No	Yes	No	No	Yes	No	Yes	Yes
8	38	F	019	Yes	Yes	Yes	Yes	Yes	Yes	No	No	Yes	No	No	No	Yes
9	42	F	020	Yes	No	Yes	Yes	No	Yes	No	Yes	No	Yes	Yes	No	Yes
10	35	F	021	Yes	Yes	Yes	Yes	Yes	No	Yes	No	Yes	No	No	Yes	No
11	40	F	022	Yes	Yes	Yes	No	No	Yes	Yes	Yes	Yes	No	No	No	Yes
12	45	F	023	Yes	Yes	Yes	Yes	Yes	Yes	No	No	No	Yes	No	No	Yes
13	52	F	025	Yes	Yes	Yes	Yes	Yes	Yes	No	No	No	No	Yes	No	No
14	35	F	026	No	Yes	Yes	Yes	No	No	No	Yes	Yes	No	Yes	No	No
15	54	F	027	Yes	Yes	Yes	Yes	Yes	No	No	No	Yes	Yes	No	Yes	Yes
16	21	M	028	No	No	Yes	Yes	No	No	No	No	No	No	No	No	Yes
17	33	F	030	Yes	Yes	No	Yes	No	Yes	No	No	Yes	Yes	Yes	No	Yes
18	32	F	032	Yes	Yes	No	No	No	Yes	No	No	No	No	No	Yes	No
19	28	M	033	Yes	Yes	Yes	Yes	Yes	No	No	No	Yes	Yes	No	Yes	Yes
20	20	M	034	Yes	No	Yes	No	Yes	No	No	No	No	No	No	No	Yes
21	43	M	035	Yes	Yes	Yes	Yes	Yes	Yes	Yes	No	Yes	No	Yes	No	Yes
22	38	M	037	Yes	Yes	Yes	Yes	No	Yes	No	Yes	No	Yes	No	Yes	No
23	30	F	038	Yes	Yes	Yes	Yes	No	Yes	No	No	Yes	Yes	No	No	No
24	31	F	040	Yes	Yes	Yes	No	Yes	No	No	Yes	No	No	No	Yes	No
25	33	M	041	Yes	No	Yes	Yes	No	No	No	No	Yes	No	No	No	Yes
26	45	F	042	Yes	Yes	Yes	Yes	Yes	No	No	No	Yes	No	No	Yes	No
27	48	F	043	Yes	Yes	Yes	Yes	Yes	Yes	No	No	No	Yes	Yes	Yes	No

*Randomized controlled clinical trial to evaluate prophylactic properties of Ayurvedic Treatment Protocol in refractory and chronic migraine patients*

*Project Progress Report*

Sr. No	Age	Sex	CRF No.	Day 0												
				Nausea	Vomiting	Photophobia	Phonophobia	Fatigue	Blurred Vision	Ear Ache	Tinnitus	Sweats	Heart Burning	Flatus	Belching	Constipation
28	27	F	044	Yes	Yes	Yes	Yes	No	No	No	No	No	No	Yes	No	No
29	23	F	045	Yes	Yes	Yes	Yes	Yes	No	Yes	No	No	No	No	No	Yes
30	50	M	046	Yes	No	Yes	Yes	No	Yes	No	No	Yes	Yes	Yes	Yes	Yes
31	30	F	049	Yes	Yes	Yes	No	Yes	No	No	Yes	Yes	No	No	No	Yes
32	35	F	051	Yes	Yes	Yes	Yes	No	No	No	No	No	Yes	No	No	Yes
33	30	F	052	No	Yes	Yes	Yes	Yes	No	No	No	Yes	No	No	Yes	No
34	37	M	054	Yes	Yes	No	Yes	No	Yes	Yes	Yes	Yes	Yes	Yes	No	No
35	28	F	056	Yes	Yes	Yes	Yes	Yes	No	Yes	Yes	No	No	Yes	Yes	Yes
36	18	M	057	Yes	Yes	Yes	No	No	No	No	No	Yes	No	No	No	No
37	45	M	062	Yes	Yes	Yes	Yes	Yes	No	Yes	Yes	No	Yes	Yes	Yes	Yes
38	18	F	065	Yes	Yes	Yes	Yes	Yes	No	No	No	Yes	No	No	No	No
39	22	M	071	Yes	No	Yes	Yes	Yes	No	No	Yes	Yes	No	No	Yes	Yes
40	46	F	072	Yes	Yes	Yes	Yes	Yes	No	No	No	Yes	Yes	No	Yes	Yes
41	28	M	073	No	Yes	Yes	No	Yes	No	Yes	No	No	No	No	No	No
42	42	F	074	Yes	Yes	Yes	No	No	Yes	No	No	Yes	No	No	Yes	No
43	28	F	075	No	Yes	Yes	Yes	Yes	No	No	No	No	No	Yes	No	Yes
44	35	F	077	Yes	No	Yes	Yes	Yes	Yes	No	Yes	Yes	No	No	Yes	No
45	28	F	079	Yes	Yes	Yes	Yes	No	No	No	No	Yes	No	No	No	No
46	55	F	081	Yes	Yes	Yes	Yes	Yes	No	Yes	No	Yes	Yes	No	No	Yes
47	43	F	083	No	Yes	Yes	No	No	Yes	No	No	Yes	Yes	No	No	Yes
48	28	F	084	Yes	No	Yes	Yes	Yes	No	No	No	No	No	No	No	Yes
49	31	F	087	Yes	Yes	Yes	Yes	Yes	No	Yes	No	No	No	No	Yes	Yes
50	25	F	090	Yes	No	Yes	No	No	No	No	No	Yes	No	No	No	Yes
51	25	F	092	No	Yes	Yes	Yes	Yes	No	No	No	No	No	No	Yes	Yes
52	34	F	095	Yes	Yes	Yes	Yes	Yes	No	Yes	No	Yes	Yes	No	No	Yes
53	45	F	097	Yes	No	Yes	No	Yes	Yes	Yes	No	No	Yes	Yes	Yes	Yes
54	25	F	101	Yes	No	Yes	Yes	No	No	No	No	Yes	No	No	Yes	Yes

*Randomized controlled clinical trial to evaluate prophylactic properties of Ayurvedic Treatment Protocol in refractory and chronic migraine patients*

*Project Progress Report*

**Table - 12: Associated Symptoms of Conventional Treatment Group at Day 30**

Sr. No	Age	Sex	CRF No.	Day 30													
				Nausea	Vomiting	Photophobia	Phonophobia	Fatigue	Blurred Vision	Ear Ache	Tinnitus	Sweats	Heart Burning	Flatus	Belching	Constipation	
1	47	F	002	Yes	No	Yes	Yes	Yes	Yes	Yes	Yes	Yes	Yes	No	Yes	Yes	Yes
2	39	F	007	Yes	No	Yes	Yes	Yes	Yes	Yes	Yes	Yes	Yes	No	Yes	Yes	Yes
3	46	F	012	Yes	Yes	Yes	No	Yes	Yes	No	No	No	No	No	No	Yes	Yes
4	40	F	013	Yes	No	Yes	Yes	Yes	No	No	No	Yes	No	No	No	No	No
5	27	M	014	Yes	No	Yes	Yes	No	No	No	No	Yes	No	No	No	Yes	No
6	35	F	017	Yes	Yes	Yes	Yes	No	Yes	No	No	Yes	No	No	No	Yes	Yes
7	33	F	018	Yes	No	Yes	Yes	Yes	No	Yes	No	No	Yes	No	No	Yes	Yes
8	38	F	019	Yes	Yes	Yes	Yes	Yes	Yes	No	No	Yes	No	No	No	No	Yes
9	42	F	020	No	Yes	Yes	Yes	No	Yes	No	Yes	No	Yes	No	No	No	Yes
10	35	F	021	Yes	Yes	Yes	Yes	No	No	Yes	Yes	Yes	No	Yes	No	No	No
11	40	F	022	Yes	Yes	Yes	No	No	Yes	Yes	Yes	Yes	No	No	No	No	Yes
12	45	F	023	Yes	Yes	Yes	Yes	Yes	Yes	No	No	No	No	No	No	No	Yes
13	52	F	025	Yes	Yes	Yes	Yes	Yes	Yes	No	No	No	No	Yes	No	No	No
14	35	F	026	No	Yes	Yes	Yes	No	No	No	Yes	Yes	No	Yes	No	No	No
15	54	F	027	Yes	Yes	Yes	Yes	Yes	No	No	No	Yes	Yes	No	Yes	Yes	Yes
16	21	M	028	Yes	No	Yes	Yes	No	No	No	No	No	No	No	No	No	Yes
17	33	F	030	Yes	Yes	No	Yes	No	Yes	No	No	No	No	Yes	No	No	Yes
18	32	F	032	Yes	Yes	No	No	No	Yes	No	No	No	No	No	No	Yes	No
19	28	M	033	Yes	Yes	Yes	Yes	Yes	No	No	No	Yes	Yes	No	No	No	Yes
20	20	M	034	Yes	No	Yes	No	Yes	No	No	No	No	No	No	No	No	Yes
21	43	M	035	Yes	Yes	No	Yes	No	Yes	Yes	No	Yes	No	No	No	No	Yes
22	38	M	037	Yes	Yes	Yes	Yes	No	No	No	Yes	No	Yes	No	No	No	No
23	30	F	038	Yes	No	Yes	Yes	No	Yes	No	No	Yes	Yes	No	No	No	No
24	31	F	040	Yes	Yes	Yes	No	Yes	No	No	Yes	No	No	No	Yes	No	No
25	33	M	041	Yes	No	Yes	Yes	No	No	No	No	Yes	No	No	No	No	Yes
26	45	F	042	Yes	Yes	Yes	Yes	Yes	No	No	No	Yes	No	No	Yes	No	No
27	48	F	043	Yes	Yes	Yes	Yes	Yes	Yes	No	No	No	Yes	Yes	No	No	No

*Randomized controlled clinical trial to evaluate prophylactic properties of Ayurvedic Treatment Protocol in refractory and chronic migraine patients*

*Project Progress Report*

Sr. No	Age	Sex	CRF No.	Day 30												
				Nausea	Vomiting	Photophobia	Phonophobia	Fatigue	Blurred Vision	Ear Ache	Tinnitus	Sweats	Heart Burning	Flatus	Belching	Constipation
28	27	F	044	Yes	Yes	Yes	Yes	No	No	No	No	No	No	No	Yes	No
29	23	F	045	Yes	Yes	Yes	Yes	Yes	No	Yes	No	No	No	No	No	Yes
30	50	M	046	Yes	No	Yes	Yes	Yes	Yes	No	No	Yes	Yes	Yes	Yes	Yes
31	30	F	049	Yes	Yes	No	No	Yes	No	No	Yes	Yes	No	No	No	No
32	35	F	051	Yes	Yes	Yes	Yes	No	No	No	No	No	Yes	No	No	Yes
33	30	F	052	No	Yes	Yes	Yes	Yes	No	No	No	Yes	No	No	Yes	No
34	37	M	054	Yes	Yes	No	Yes	No	Yes	Yes	Yes	Yes	Yes	Yes	No	No
35	28	F	056	Yes	Yes	Yes	Yes	Yes	No	Yes	Yes	No	No	Yes	Yes	Yes
36	18	M	057	Yes	Yes	Yes	No	No	No	No	No	Yes	No	No	No	No
37	45	M	062	Yes	No	Yes	No	Yes	No	Yes	No	No	Yes	No	No	Yes
38	18	F	065	Yes	Yes	Yes	Yes	Yes	No	No	No	No	No	No	No	No
39	22	M	071	Yes	No	Yes	No	Yes	No	No	Yes	Yes	No	No	Yes	Yes
40	46	F	072	Yes	No	Yes	Yes	Yes	No	No	No	Yes	Yes	No	No	Yes
41	28	M	073	No	Yes	Yes	No	Yes	No	Yes	No	No	No	No	No	No
42	42	F	074	Yes	Yes	Yes	No	No	Yes	No	No	Yes	No	No	No	No
43	28	F	075	No	Yes	Yes	Yes	Yes	No	No	No	No	No	Yes	No	Yes
44	35	F	077	Yes	No	Yes	No	Yes	Yes	No	No	Yes	No	No	Yes	No
45	28	F	079	Yes	Yes	Yes	No	No	No	No	No	Yes	No	No	No	No
46	55	F	081	Yes	Yes	Yes	No	Yes	No	No	No	Yes	No	No	No	Yes
47	43	F	083	No	Yes	Yes	No	No	Yes	No	No	Yes	No	No	No	Yes
48	28	F	084	Yes	No	Yes	Yes	Yes	No	No	No	No	No	No	No	Yes
49	31	F	087	Yes	Yes	Yes	Yes	Yes	No	Yes	No	No	No	No	No	Yes
50	25	F	090	Yes	No	Yes	No	No	No	No	No	Yes	No	No	No	Yes
51	25	F	092	No	Yes	Yes	Yes	Yes	No	No	No	No	No	No	Yes	Yes
52	34	F	095	Yes	Yes	Yes	Yes	Yes	No	Yes	No	Yes	No	No	No	Yes
53	45	F	097	Yes	No	Yes	No	Yes	Yes	No	No	No	Yes	Yes	No	Yes
54	25	F	101	On Treatment												

*Randomized controlled clinical trial to evaluate prophylactic properties of Ayurvedic Treatment Protocol in refractory and chronic migraine patients*

*Project Progress Report*

**Table - 13: Associated Symptoms of Conventional Treatment Group at Day 60**

Sr. No	Age	Sex	CRF No.	Day 60												
				Nausea	Vomiting	Photophobia	Phonophobia	Fatigue	Blurred Vision	Ear Ache	Tinnitus	Sweats	Heart Burning	Flatus	Belching	Constipation
1	47	F	002	Yes	Yes	Yes	Yes	Yes	Yes	Yes	Yes	Yes	Yes	Yes	Yes	Yes
2	39	F	007	No	No	Yes	Yes	No	Yes	No	Yes	Yes	No	Yes	No	Yes
3	46	F	012	Yes	No	Yes	No	Yes	Yes	No	No	No	No	No	Yes	Yes
4	40	F	013	Yes	No	Yes	Yes	Yes	No	No	No	Yes	No	No	No	No
5	27	M	014	Yes	No	Yes	No	No	No	No	No	Yes	No	No	Yes	No
6	35	F	017	Yes	No	Yes	Yes	No	Yes	No	No	No	No	No	No	Yes
7	33	F	018	Yes	No	Yes	Yes	Yes	Yes	No	No	Yes	Yes	No	Yes	Yes
8	38	F	019	Yes	Yes	Yes	Yes	Yes	Yes	No	No	No	No	No	No	Yes
9	42	F	020	No	Yes	Yes	Yes	No	Yes	No	Yes	No	Yes	No	Yes	No
10	35	F	021	Yes	Yes	No	Yes	No	No	Yes	Yes	Yes	No	No	Yes	No
11	40	F	022	Yes	Yes	Yes	No	No	Yes	Yes	No	No	No	No	No	Yes
12	45	F	023	Yes	Yes	Yes	Yes	Yes	No	No	No	No	No	No	No	Yes
13	52	F	025	Yes	Yes	Yes	Yes	Yes	Yes	No	No	No	No	No	No	No
14	35	F	026	No	Yes	Yes	Yes	No	No	No	Yes	Yes	No	Yes	No	No
15	54	F	027	Yes	Yes	Yes	Yes	Yes	No	No	No	Yes	Yes	No	Yes	Yes
16	21	M	028	Yes	No	Yes	Yes	Yes	No	No	No	No	No	No	Yes	No
17	33	F	030	Yes	Yes	No	Yes	No	Yes	No	No	No	No	Yes	No	No
18	32	F	032	Yes	Yes	No	No	Yes	No	No	No	No	No	No	No	No
19	28	M	033	Yes	Yes	Yes	Yes	Yes	No	No	No	No	Yes	No	No	No
20	20	M	034	Yes	No	Yes	No	No	No	No	No	No	No	No	No	Yes
21	43	M	035	Yes	Yes	No	Yes	No	Yes	Yes	No	Yes	No	No	No	Yes
22	38	M	037	Yes	No	Yes	Yes	No	No	No	No	No	Yes	No	No	No
23	30	F	038	Yes	No	Yes	Yes	No	Yes	No	No	No	No	No	No	No
24	31	F	040	Yes	No	Yes	No	Yes	No	No	Yes	No	No	No	No	No
25	33	M	041	Yes	No	Yes	Yes	No	No	No	No	No	No	No	No	Yes
26	45	F	042	Yes	Yes	Yes	Yes	Yes	No	No	No	No	No	No	No	No
27	48	F	043	Yes	Yes	Yes	Yes	Yes	No	No	No	No	Yes	No	No	No

*Randomized controlled clinical trial to evaluate prophylactic properties of Ayurvedic Treatment Protocol in refractory and chronic migraine patients*



*Project Progress Report*

Sr. No	Age	Sex	CRF No.	Day 60												
				Nausea	Vomiting	Photophobia	Phonophobia	Fatigue	Blurred Vision	Ear Ache	Tinnitus	Sweats	Heart Burning	Flatus	Belching	Constipation
28	27	F	044	Yes	Yes	Yes	Yes	No	No	No	No	No	No	No	Yes	No
29	23	F	045	Yes	No	Yes	Yes	Yes	No	Yes	No	No	No	No	No	Yes
30	50	M	046	No	No	Yes	Yes	Yes	Yes	No	No	No	No	Yes	Yes	Yes
31	30	F	049	Yes	No	Yes	No	Yes	No	No	No	Yes	No	No	No	No
32	35	F	051	Yes	Yes	Yes	Yes	No	No	No	No	No	No	No	No	Yes
33	30	F	052	Yes	No	Yes	No	No	No	No	No	Yes	No	No	Yes	No
34	37	M	054	No	Yes	Yes	Yes	No	Yes	Yes	Yes	Yes	Yes	Yes	Yes	No
35	28	F	056	Yes	No	Yes	Yes	Yes	No	Yes	No	No	No	Yes	No	Yes
36	18	M	057	Yes	No	Yes	Yes	No	No	No	No	Yes	No	No	No	No
37	45	M	062	Yes	No	Yes	No	Yes	No	No	No	No	Yes	No	No	Yes
38	18	F	065	No	Yes	Yes	No	Yes	No	No	No	No	No	No	No	No
39	22	M	071	Yes	No	Yes	No	Yes	No	No	No	Yes	No	No	Yes	Yes
40	46	F	072	Yes	No	Yes	Yes	Yes	No	No	No	Yes	Yes	No	No	Yes
41	28	M	073	No	No	Yes	No	Yes	No	Yes	No	No	No	No	No	No
42	42	F	074	Yes	Yes	Yes	No	No	Yes	No	No	Yes	No	No	No	No
43	28	F	075	No	Yes	Yes	Yes	Yes	No	No	No	No	No		No	No
44	35	F	077	Yes	No	No	No	Yes	Yes	No	No	Yes	No	No	Yes	No
45	28	F	079	Yes	Yes	Yes	No	No	No	No	No	Yes	No	No	No	Yes
46	55	F	081	Yes	No	Yes	No	Yes	No	No	No	Yes	No	No	No	No
47	43	F	083	No	Yes	Yes	No	No	Yes	No	No	Yes	No	No	No	No
48	28	F	084	Yes	No	Yes	No	Yes	No	No	No	No	No	No	No	No
49	31	F	087	Yes	Yes	Yes	No	Yes	No	No	No	No	No	No	No	Yes
50	25	F	090	Yes	No	Yes	No	No	No	No	No	Yes	No	No	No	No
51	25	F	092	No	Yes	Yes	Yes	Yes	No	No	No	No	No	No	No	Yes
52	34	F	095	Yes	Yes	Yes	Yes	Yes	No	Yes	No	Yes	No	No	No	No
53	45	F	097	On Treatment												
54	25	F	101	On Treatment												

*Randomized controlled clinical trial to evaluate prophylactic properties of Ayurvedic Treatment Protocol in refractory and chronic migraine patients*

*Project Progress Report*

**Table - 14: Associated Symptoms of Conventional Treatment Group at Day 90**

Sr. No	Age	Sex	CRF No.	Day 90												
				Nausea	Vomiting	Photophobia	Phonophobia	Fatigue	Blurred Vision	Ear Ache	Tinnitus	Sweats	Heart Burning	Flatus	Belching	Constipation
1	47	F	002	Lost to Follow up												
2	39	F	007	No	No	Yes	Yes	Yes	Yes	Yes	Yes	Yes	No	Yes	No	Yes
3	46	F	012	Yes	No	Yes	No	Yes	Yes	No	No	No	No	No	No	No
4	40	F	013	Yes	No	Yes	Yes	Yes	No	No	No	Yes	No	No	No	No
5	27	M	014	Yes	No	Yes	Yes	No	No	No	No	No	No	No	Yes	No
6	35	F	017	Yes	No	Yes	Yes	No	Yes	No	No	No	No	No	No	No
7	33	F	018	Yes	Yes	Yes	Yes	Yes	No	No	No	Yes	Yes	Yes	Yes	Yes
8	38	F	019	Yes	Yes	Yes	Yes	Yes	No	No	No	No	No	No	Yes	Yes
9	42	F	020	Yes	No	Yes	Yes	Yes	Yes	Yes	Yes	No	No	Yes	Yes	No
10	35	F	021	Yes	Yes	No	Yes	No	No	Yes	No	Yes	Yes	No	No	Yes
11	40	F	022	Yes	No	Yes	No	No	Yes	Yes	No	No	No	No	No	Yes
12	45	F	023	Yes	No	Yes	Yes	No	No	No	No	No	No	No	No	Yes
13	52	F	025	Yes	Yes	Yes	Yes	Yes	Yes	No	No	No	No	No	No	No
14	35	F	026	Yes	No	Yes	Yes	Yes	No	No	No	Yes	No	No	No	Yes
15	54	F	027	Yes	Yes	Yes	Yes	No	No	No	No	Yes	No	No	No	Yes
16	21	M	028	Yes	No	Yes	Yes	Yes	No	No	No	No	No	No	No	No
17	33	F	030	Yes	Yes	No	Yes	No	Yes	No	No	No	No	No	No	No
18	32	F	032	No	Yes	No	No	Yes	No	No	No	No	No	No	No	No
19	28	M	033	Yes	No	Yes	Yes	No	No	No	No	No	No	No	No	No
20	20	M	034	Yes	No	Yes	No	No	No	No	No	No	No	No	No	No
21	43	M	035	Yes	No	Yes	Yes	No	Yes	Yes	No	No	No	No	No	Yes
22	38	M	037	Yes	No	Yes	Yes	No	No	No	No	No	No	No	No	No
23	30	F	038	Yes	No	Yes	No	No	No	No	No	No	No	No	No	No
24	31	F	040	Yes	No	Yes	No	Yes	No	No	No	No	No	No	No	No
25	33	M	041	Yes	No	Yes	Yes	No	No	No	No	No	No	No	No	Yes
26	45	F	042	No	Yes	No	Yes	Yes	No	No	No	No	No	No	No	No
27	48	F	043	Yes	No	Yes	Yes	Yes	No	No	No	No	No	No	No	No

*Randomized controlled clinical trial to evaluate prophylactic properties of Ayurvedic Treatment Protocol in refractory and chronic migraine patients*

*Project Progress Report*

Sr. No	Age	Sex	CRF No.	Day 90												
				Nausea	Vomiting	Photophobia	Phonophobia	Fatigue	Blurred Vision	Ear Ache	Tinnitus	Sweats	Heart Burning	Flatus	Belching	Constipation
28	27	F	044	Yes	No	Yes	No	No	No	No	No	No	No	No	No	No
29	23	F	045	Yes	No	Yes	No	Yes	Yes	No	No	No	No	No	No	Yes
30	50	M	046	Yes	No	Yes	Yes	No	Yes	No	No	No	Yes	No	Yes	Yes
31	30	F	049	Yes	No	Yes	No	No	No	No	No	Yes	No	No	Yes	No
32	35	F	051	No	No	Yes	No	No	No	No	No	No	No	No	Yes	Yes
33	30	F	052	Yes	No	No	Yes	No	No	No	No	No	No	No	Yes	No
34	37	M	054	No	Yes	Yes	Yes	No	Yes	Yes	No	Yes	No	No	No	No
35	28	F	056	Yes	No	Yes	No	Yes	No	Yes	No	No	No	Yes	No	Yes
36	18	M	057	Yes	No	Yes	No	No	No	No	No	Yes	No	No	No	No
37	45	M	062	Yes	No	Yes	No	Yes	No	No	No	No	No	No	No	Yes
38	18	F	065	No	Yes	Yes	No	Yes	No	No	No	No	No	No	No	No
39	22	M	071	Yes	No	Yes	No	Yes	No	No	No	Yes	No	No	No	No
40	46	F	072	Yes	No	Yes	No	Yes	No	No	No	Yes	Yes	No	No	No
41	28	M	073	No	No	Yes	No	Yes	No	Yes	No	No	No	No	No	No
42	42	F	074	Yes	No	Yes	No	No	Yes	No	No	No	No	No	No	No
43	28	F	075	No	Yes	No	Yes	Yes	No	No	No	No	No	No	No	No
44	35	F	077	Yes	No	No	No	Yes	No	No	No	Yes	No	No	Yes	No
45	28	F	079	No	Yes	Yes	No	No	No	No	No	Yes	No	No	No	Yes
46	55	F	081	Yes	No	Yes	No	No	No	No	No	Yes	No	No	No	No
47	43	F	083	No	No	Yes	No	No	No	No	No	Yes	No	No	No	No
48	28	F	084	Yes	No	Yes	No	Yes	No	No	No	No	No	No	No	No
49	31	F	087	Yes	No	Yes	No	Yes	No	No	No	No	No	No	No	No
50	25	F	090	Yes	No	Yes	No	No	No	No	No	Yes	No	No	No	No
51	25	F	092	No	Yes	No	Yes	Yes	No	No	No	No	No	No	No	Yes
52	34	F	095	On Treatment												
53	45	F	097	On Treatment												
54	25	F	101	On Treatment												

*Randomized controlled clinical trial to evaluate prophylactic properties of Ayurvedic Treatment Protocol in refractory and chronic migraine patients*

*Project Progress Report*

**Table - 15: Associated Symptoms of Conventional Treatment Group at Day 120**

Sr. No	Age	Sex	CRF No.	Day 120												
				Nausea	Vomiting	Photophobia	Phonophobia	Fatigue	Blurred Vision	Ear Ache	Tinnitus	Sweats	Heart Burning	Flatus	Belching	Constipation
1	47	F	002	Lost to Follow up												
2	39	F	007	No	No	Yes	Yes	Yes	Yes	Yes	Yes	Yes	No	Yes	No	Yes
3	46	F	012	Yes	No	Yes	No	Yes	Yes	No	No	No	No	No	No	No
4	40	F	013	Yes	No	Yes	Yes	Yes	No	No	No	Yes	No	No	No	No
5	27	M	014	Yes	No	Yes	Yes	No	No	No	No	No	No	No	Yes	No
6	35	F	017	Yes	No	Yes	Yes	No	Yes	No	No	No	No	No	No	No
7	33	F	018	Yes	No	Yes	Yes	Yes	No	No	No	Yes	Yes	No	Yes	Yes
8	38	F	019	Yes	Yes	No	Yes	No	No	No	No	No	No	No	Yes	No
9	42	F	020	Yes	No	Yes	Yes	No	No	No	No	Yes	No	No	No	Yes
10	35	F	021	Yes	Yes	No	Yes	No	No	No	Yes	Yes	Yes	No	No	Yes
11	40	F	022	Yes	No	Yes	No	No	No	No	No	No	No	No	No	Yes
12	45	F	023	Yes	No	Yes	Yes	No	No	No	No	No	No	No	No	No
13	52	F	025	Yes	Yes	Yes	Yes	Yes	Yes	No	No	No	No	No	No	No
14	35	F	026	Yes	No	Yes	Yes	Yes	No	No	No	No	No	No	Yes	No
15	54	F	027	Yes	Yes	Yes	Yes	No	No	No	No	Yes	No	No	No	No
16	21	M	028	Yes	No	No	Yes	Yes	No	No	No	No	No	No	No	No
17	33	F	030	Yes	Yes	No	Yes	No	Yes	No	No	No	No	No	No	No
18	32	F	032	Yes	Yes	No	No	Yes	No	No	No	No	No	No	No	No
19	28	M	033	Yes	No	Yes	No	Yes	No	No	No	No	No	No	No	No
20	20	M	034	Yes	No	Yes	No	No	No	No	No	No	No	No	No	No
21	43	M	035	Yes	No	Yes	Yes	No	No	Yes	No	No	No	No	No	Yes
22	38	M	037	Yes	No	Yes	No	No	No	No	No	No	No	No	No	No
23	30	F	038	Yes	No	Yes	No	Yes	No	No	No	No	No	No	Yes	No
24	31	F	040	Yes	No	Yes	No	Yes	No	No	No	No	No	No	No	No
25	33	M	041	Yes	No	Yes	Yes	No	No	No	No	No	No	No	No	Yes
26	45	F	042	Yes	No	Yes	No	Yes	No	No	No	No	No	No	No	No
27	48	F	043	Yes	No	Yes	No	Yes	No	No	No	No	No	No	No	No

*Randomized controlled clinical trial to evaluate prophylactic properties of Ayurvedic Treatment Protocol in refractory and chronic migraine patients*

*Project Progress Report*

Sr. No	Age	Sex	CRF No.	Day 120												
				Nausea	Vomiting	Photophobia	Phonophobia	Fatigue	Blurred Vision	Ear Ache	Tinnitus	Sweats	Heart Burning	Flatus	Belching	Constipation
28	27	F	044	Yes	No	Yes	No	Yes	No	No	No	No	No	No	No	No
29	23	F	045	Yes	No	Yes	No	Yes	No	No	No	No	No	No	No	Yes
30	50	M	046	Yes	No	Yes	Yes	No	No	No	No	No	Yes	No	Yes	No
31	30	F	049	Yes	No	Yes	No	No	No	No	No	Yes	No	No	Yes	No
32	35	F	051	No	No	Yes	No	No	No	No	No	No	No	No	Yes	No
33	30	F	052	Yes	No	No	Yes	No	No	No	No	No	No	No	No	No
34	37	M	054	No	No	Yes	No	No	Yes	Yes	No	Yes	No	No	No	No
35	28	F	056	Yes	No	Yes	No	Yes	No	No	No	No	No	Yes	No	Yes
36	18	M	057	Yes	No	Yes	No	No	No	No	No	Yes	No	No	No	No
37	45	M	062	No	No	Yes	No	Yes	No	No	No	No	No	No	No	Yes
38	18	F	065	No	Yes	Yes	No	Yes	No	No	No	No	No	No	No	No
39	22	M	071	Yes	No	No	No	No	No	No	No	No	No	No	No	No
40	46	F	072	No	No	Yes	No	Yes	No	No	No		No	No	No	No
41	28	M	073	Yes	No	Yes	No	No	No	No	No	No	No	No	No	No
42	42	F	074	Yes	No	No	No	No	No	No	No	No	No	No	No	No
43	28	F	075	No	Yes	No	No	Yes	No	No	No	Yes	No	No	No	No
44	35	F	077	Yes	No	No	No	Yes	No	No	No	Yes	No	No	No	No
45	28	F	079	No	No	Yes	No	No	No	No	No	Yes	No	No	No	No
46	55	F	081	Yes	No	No	No	No	No	No	No	Yes	No	No	No	No
47	43	F	083	No	No	No	No	No	No	No	No	No	No	No	No	No
48	28	F	084	Yes	No	No	No	No	No	No	No	No	No	No	No	No
49	31	F	087	No	No	No	No	Yes	No	No	No	No	No	No	No	No
50	25	F	090	On Treatment												
51	25	F	092	On Treatment												
52	34	F	095	On Treatment												
53	45	F	097	On Treatment												
54	25	F	101	On Treatment												

*Randomized controlled clinical trial to evaluate prophylactic properties of Ayurvedic Treatment Protocol in refractory and chronic migraine patients*

*Project Progress Report*

**Table - 16: Outcome of Conventional treatment Group**

Sr. No	CRF No.	Age	Sex	Date of Enrollment	Duration of Conventional Treatment in days	Status at Day 0	Status at Day 30	Status at Day 60	Status at Day 90	Status at Day 120	Status at Day 150	Status at Day 180	Status at Day 360
1	002	47	F	29-May-12	90 Days	Severe Pain with need of medication	Severe Pain with need of medication	Severe Pain with need of medication	Severe Pain with need of medication	LTF	LTF	LTF	LTF
2	007	39	F	1-Aug-12	180 Days	Severe Pain with need of medication	Severe Pain with need of medication	Moderate pain with need of medication	Moderate pain with need of medication	Moderate pain with need of medication	Moderate pain with need of medication	Moderate pain with need of medication	Mild pain with no need of medication
3	012	46	F	10-Sep-12	180 Days	Moderate pain with need of medication	Moderate pain with need of medication	Moderate pain with need of medication	Moderate pain with need of medication	Moderate pain with need of medication	Moderate pain with need of medication	Moderate pain with need of medication	Mild pain with no need of medication
4	013	40	F	21-Sep-12	150 Days	Moderate pain with need of medication	Moderate pain with need of medication	Moderate pain with need of medication	Moderate pain with need of medication	Moderate pain with need of medication	Moderate pain with need of medication	Mild pain with no need of medication	Mild pain with no need of medication
5	014	27	M	1-Oct-12	180 Days	Severe Pain with need of medication	Severe Pain with need of medication	Severe Pain with need of medication	Severe Pain with need of medication	Moderate pain with need of medication	Moderate pain with need of medication	Moderate pain with need of medication	Mild pain with no need of medication
6	017	35	F	16-Nov-12	150 Days	Severe Pain with need of medication	Severe Pain with need of medication	Moderate pain with need of medication	Moderate pain with need of medication	Moderate pain with need of medication	Moderate pain with need of medication	Mild pain with no need of medication	Mild pain with no need of medication
7	018	33	F	9-Nov-12	150 Days	Severe Pain with need of medication	Severe Pain with need of medication	Severe Pain with need of medication	Moderate pain with need of medication	Moderate pain with need of medication	Moderate pain with need of medication	Mild pain with no need of medication	Mild pain with no need of medication
8	019	38	F	16-Nov-12	180 Days	Severe Pain with need of medication	Severe Pain with need of medication	Severe Pain with need of medication	Moderate pain with need of medication	Moderate pain with need of medication	Moderate pain with need of medication	Moderate pain with need of medication	Moderate pain with need of medication
9	020	42	F	14-Dec-12	180 Days	Severe Pain with need of medication	Moderate pain with need of medication	Moderate pain with need of medication	Moderate pain with need of medication	Moderate pain with need of medication	Moderate pain with need of medication	Moderate pain with need of medication	Moderate pain with need of medication
10	021	35	F	24-Dec-12	180 Days	Severe Pain with need of medication	Severe Pain with need of medication	Severe Pain with need of medication	Moderate pain with need of medication	Moderate pain with need of medication	Moderate pain with need of medication	Moderate pain with need of medication	Moderate pain with need of medication
11	022	40	F	4-Jan-13	120 Days	Moderate pain with need of medication	Moderate pain with need of medication	Moderate pain with need of medication	Moderate pain with need of medication	Moderate pain with need of medication	Mild pain with no need of medication	Mild pain with no need of medication	Mild pain with no need of medication
12	023	45	F	16-Jan-13	150 Days	Severe Pain with need of medication	Moderate pain with need of medication	Moderate pain with need of medication	Moderate pain with need of medication	Moderate pain with need of medication	Moderate pain with need of medication	Mild pain with no need of medication	Mild pain with no need of medication
13	025	52	F	15-Feb-13	150 Days	Severe Pain with need of medication	Severe Pain with need of medication	Moderate pain with need of medication	Moderate pain with need of medication	Moderate pain with need of medication	Moderate pain with need of medication	Mild pain with no need of medication	Mild pain with no need of medication
14	026	35	F	6-Mar-13	180 Days	Severe Pain with need of medication	Severe Pain with need of medication	Severe Pain with need of medication	Moderate pain with need of medication	Moderate pain with need of medication	Moderate pain with need of medication	Moderate pain with need of medication	Moderate pain with need of medication

*Randomized controlled clinical trial to evaluate prophylactic properties of Ayurvedic Treatment Protocol in refractory and chronic migraine patients*

*Project Progress Report*

Sr. No	CRF No.	Age	Sex	Date of Enrollment	Duration of Conventional Treatment in days	Status at Day 0	Status at Day 30	Status at Day 60	Status at Day 90	Status at Day 120	Status at Day 150	Status at Day 180	Status at Day 360
15	027	54	F	3-Apr-13	180 Days	Severe Pain with need of medication	Moderate pain with need of	Moderate pain with need of	Moderate pain with need of	Moderate pain with need of	Moderate pain with need of	Moderate pain with need of	Moderate pain with need of
16	028	21	M	3-Apr-13	180 Days	Severe Pain with need of medication	Severe Pain with need of medication	Moderate pain with need of medication	Moderate pain with need of medication	Moderate pain with need of medication	Moderate pain with need of medication	Moderate pain with need of medication	Moderate pain with need of medication
17	030	33	F	24-Apr-13	150 Days	Severe Pain with need of medication	Severe Pain with need of medication	Severe Pain with need of medication	Moderate pain with need of medication	Moderate pain with need of medication	Moderate pain with need of medication	Mild pain with no need of medication	Mild pain with no need of medication
18	032	32	F	11-May-13	180 Days	Severe Pain with need of medication	Severe Pain with need of medication	Moderate pain with need of medication	Moderate pain with need of medication	Moderate pain with need of medication	Moderate pain with need of medication	Moderate pain with need of medication	Moderate pain with need of medication
19	033	28	M	25-May-13	180 Days	Severe Pain with need of medication	Severe Pain with need of medication	Severe Pain with need of medication	Severe Pain with need of medication	Moderate pain with need of medication	Moderate pain with need of medication	Moderate pain with need of medication	Moderate pain with need of medication
20	034	20	M	25-May-13	180 Days	Severe Pain with need of medication	Severe Pain with need of medication	Moderate pain with need of medication	Moderate pain with need of medication	Moderate pain with need of medication	Moderate pain with need of medication	Moderate pain with need of medication	Mild pain with no need of medication
21	035	43	M	5-Jun-13	150 Days	Severe Pain with need of medication	Severe Pain with need of medication	Severe Pain with need of medication	Moderate pain with need of medication	Moderate pain with need of medication	Moderate pain with need of medication	Mild pain with no need of medication	Mild pain with no need of medication
22	037	38	M	19-Jun-13	180 Days	Severe Pain with need of medication	Moderate pain with need of medication	Moderate pain with need of medication	Moderate pain with need of medication	Moderate pain with need of medication	Moderate pain with need of medication	Moderate pain with need of medication	Moderate pain with need of medication
23	038	30	F	26-Jun-13	180 Days	Severe Pain with need of medication	Severe Pain with need of medication	Moderate pain with need of medication	Moderate pain with need of medication	Moderate pain with need of medication	Moderate pain with need of medication	Moderate pain with need of medication	Moderate pain with need of medication
24	040	31	F	10-Jul-13	150 Days	Moderate pain with need of medication	Moderate pain with need of medication	Moderate pain with need of medication	Moderate pain with need of medication	Moderate pain with need of medication	Moderate pain with need of medication	Mild pain with no need of medication	Treatment Completed
25	041	33	M	13-Jul-13	150 Days	Severe Pain with need of medication	Moderate pain with need of medication	Moderate pain with need of medication	Moderate pain with need of medication	Moderate pain with need of medication	Moderate pain with need of medication	Mild pain with no need of medication	Treatment Completed
26	042	45	F	31-Jul-13	180 Days	Severe Pain with need of medication	Severe Pain with need of medication	Moderate pain with need of medication	Moderate pain with need of medication	Moderate pain with need of medication	Moderate pain with need of medication	Moderate pain with need of medication	Treatment Completed
27	043	48	F	14-Aug-13	150 days	Severe Pain with need of medication	Severe Pain with need of medication	Moderate pain with need of medication	Moderate pain with need of medication	Moderate pain with need of medication	Moderate pain with need of medication	Mild pain with no need of medication	Treatment Completed
28	044	27	F	14-Aug-13	120 days	Severe Pain with need of medication	Moderate pain with need of medication	Moderate pain with need of medication	Moderate pain with need of medication	Moderate pain with need of medication	Mild pain with no need of medication	Mild pain with no need of medication	Treatment Completed

*Randomized controlled clinical trial to evaluate prophylactic properties of Ayurvedic Treatment Protocol in refractory and chronic migraine patients*

*Project Progress Report*

Sr. No	CRF No.	Age	Sex	Date of Enrollment	Duration of Conventional Treatment in days	Status at Day 0	Status at Day 30	Status at Day 60	Status at Day 90	Status at Day 120	Status at Day 150	Status at Day 180	Status at Day 360
29	045	23	F	24-Aug-13	180 days	Severe Pain with need of medication	Severe Pain with need of medication	Severe Pain with need of medication	Moderate pain with need of	Moderate pain with need of	Moderate pain with need of	Moderate pain with need of	Treatment Completed
30	046	50	M	31-Aug-13	120 days	Severe Pain with need of medication	Moderate pain with need of medication	Moderate pain with need of medication	Moderate pain with need of medication	Moderate pain with need of medication	Mild pain with no need of medication	Mild pain with no need of medication	Treatment Completed
31	049	30	F	14-Sep-13	120 days	Moderate pain with need of medication	Moderate pain with need of medication	Moderate pain with need of medication	Moderate pain with need of medication	Mild pain with no need of medication	Mild pain with no need of medication	Mild pain with no need of medication	Treatment Completed
32	051	35	F	28-Sep-13	150 days	Severe Pain with need of medication	Severe Pain with need of medication	Moderate pain with need of medication	Moderate pain with need of medication	Moderate pain with need of medication	Moderate pain with need of medication	Mild pain with no need of medication	Treatment Completed
33	052	30	F	28-Sep-13	120 days	Severe Pain with need of medication	Severe Pain with need of medication	Moderate pain with need of medication	Moderate pain with need of medication	Moderate pain with need of medication	Mild pain with no need of medication	Mild pain with no need of medication	Treatment Completed
34	054	37	M	9-Oct-13	120 days	Moderate pain with need of medication	Moderate pain with need of medication	Moderate pain with need of medication	Moderate pain with need of medication	Mild pain with no need of medication	Mild pain with no need of medication	Mild pain with no need of medication	Treatment Completed
35	056	28	F	16-Oct-13	120 days	Severe Pain with need of medication	Severe Pain with need of medication	Moderate pain with need of medication	Moderate pain with need of medication	Moderate pain with need of medication	Mild pain with no need of medication	Mild pain with no need of medication	Treatment Completed
36	057	18	M	30-Oct-13	180 days	Severe Pain with need of medication	Severe Pain with need of medication	Severe Pain with need of medication	Severe Pain with need of medication	Moderate pain with need of medication	Moderate pain with need of medication	Moderate pain with need of medication	Treatment Completed
37	062	45	M	27-Nov-13	120 days	Severe Pain with need of medication	Moderate pain with need of medication	Moderate pain with need of medication	Moderate pain with need of medication	Mild pain with no need of medication	Mild pain with no need of medication	Mild pain with no need of medication	Treatment Completed
38	065	18	F	11-Dec-13	180 days	Severe Pain with need of medication	Severe Pain with need of medication	Severe Pain with need of medication	Severe Pain with need of medication	Moderate pain with need of medication	Moderate pain with need of medication	Moderate pain with need of medication	Treatment Completed
39	071	22	M	19-Feb-14	120 days	Severe Pain with need of medication	Severe Pain with need of medication	Moderate pain with need of medication	Moderate pain with need of medication	Mild pain with no need of medication	Mild pain with no need of medication	Mild pain with no need of medication	Treatment Completed
40	072	46	F	5-Mar-14	120 days	Severe Pain with need of medication	Severe Pain with need of medication	Moderate pain with need of medication	Moderate pain with need of medication	Mild pain with no need of medication	Mild pain with no need of medication	Mild pain with no need of medication	Treatment Completed
41	073	28	M	5-Mar-14	120 days	Severe Pain with need of medication	Moderate pain with need of medication	Moderate pain with need of medication	Moderate pain with need of medication	Moderate pain with need of medication	Mild pain with no need of medication	Mild pain with no need of medication	Treatment Completed
42	074	42	F	23-Apr-14	120 days	Moderate pain with need of medication	Moderate pain with need of medication	Moderate pain with need of medication	Moderate pain with need of medication	Mild pain with no need of medication	Mild pain with no need of medication	Treatment Completed	Treatment Completed

*Randomized controlled clinical trial to evaluate prophylactic properties of Ayurvedic Treatment Protocol in refractory and chronic migraine patients*



***Project Progress Report***

Sr. No	CRF No.	Age	Sex	Date of Enrollment	Duration of Conventional Treatment in days	Status at Day 0	Status at Day 30	Status at Day 60	Status at Day 90	Status at Day 120	Status at Day 150	Status at Day 180	Status at Day 360
43	075	28	F	17-May-14	120 days	Moderate pain with need of	Moderate pain with need of	Moderate pain with need of	Moderate pain with need of	Moderate pain with need of	Moderate pain with need of	Mild pain with no need of	Treatment Completed
44	077	35	F	21-Jun-14	120 days	Moderate pain with need of medication	Moderate pain with need of medication	Moderate pain with need of medication	Moderate pain with need of medication	Moderate pain with need of medication	Mild pain with no need of medication	Mild pain with no need of medication	Treatment Completed
45	079	28	F	28-Jun-14	120 days	Severe Pain with need of medication	Severe Pain with need of medication	Severe Pain with need of medication	Moderate pain with need of medication	Moderate pain with need of medication	Mild pain with no need of medication	Treatment Completed	Treatment Completed
46	081	55	F	18-Jun-14	150 days	Severe Pain with need of medication	Severe Pain with need of medication	Moderate pain with need of medication	Moderate pain with need of medication	Moderate pain with need of medication	Moderate pain with need of medication	Mild pain with no need of medication	Treatment Completed
47	083	43	F	12-Jul-14	150 days	Severe Pain with need of medication	Severe Pain with need of medication	Moderate pain with need of medication	Moderate pain with need of medication	Moderate pain with need of medication	Mild pain with no need of medication	Treatment Completed	Treatment Completed
48	084	28	F	12-Jul-14	150 days	Severe Pain with need of medication	Moderate pain with need of medication	Moderate pain with need of medication	Moderate pain with need of medication	Moderate pain with need of medication	Moderate pain with need of medication	Rescue	Rescue
49	087	31	F	20-Aug-14	120 Days	Severe Pain with need of medication	Severe Pain with need of medication	Moderate pain with need of medication	Moderate pain with need of medication	Moderate pain with need of medication	Rescue	Rescue	Rescue
50	090	25	F	17-Sep-14	90 Days	Severe Pain with need of medication	Severe Pain with need of medication	Severe Pain with need of medication	Moderate pain with need of medication	Rescue	Rescue	Rescue	Rescue
51	092	25	F	17-Sep-14	90 Days	Severe Pain with need of medication	Severe Pain with need of medication	Moderate pain with need of medication	Moderate pain with need of medication	Rescue	Rescue	Rescue	Rescue
52	095	34	F	22-Oct-14	60 days	Severe Pain with need of medication	Severe Pain with need of medication	Severe Pain with need of medication	Rescue	Rescue	Rescue	Rescue	Rescue
53	097	45	F	15-Nov-14	30 days	Severe Pain with need of medication	Severe Pain with need of medication	Rescue	Rescue	Rescue	Rescue	Rescue	Rescue
54	101	25	F	6-Dec-14	30 days	Severe Pain with need of medication	Rescue	Rescue	Rescue	Rescue	Rescue	Rescue	Rescue

***Randomized controlled clinical trial to evaluate prophylactic properties of Ayurvedic Treatment Protocol in refractory and chronic migraine patients***

*Project Progress Report*

**Table - 17: Changes in VAS and MIDAS after receiving Conventional Treatment**

S. No.	CRF No.	Age	Sex	VAS		MIDAS		No. of headache days in last 90 days	
				Pre-Treatment	Post-Treatment	Pre-Treatment	Post-Treatment	Pre-Treatment	Post-Treatment
1	002	47	F	10	LTF	40	LTF	90	LTF
2	007	39	F	9	5	37	25	90	30
3	012	46	F	6	4	40	25	45	15
4	013	40	F	5	4	16	11	30	15
5	014	27	M	8	5	55	26	90	40
6	017	35	F	9	6	42	21	60	30
7	018	33	F	8	3	25	17	50	25
8	019	38	F	9	4	32	25	45	12
9	020	42	F	8	4	24	18	60	15
10	021	35	F	8	3	28	26	60	15
11	022	40	F	7	3	30	20	30	12
12	023	45	F	8	4	25	17	45	15
13	025	52	F	9	4	25	15	90	30
14	026	35	F	9	4	34	20	60	18
15	027	54	F	8	3	32	15	75	35
16	028	21	M	9	4	40	12	60	20
17	030	33	F	8	4	38	16	75	25
18	032	32	F	9	3	43	17	45	15
19	033	28	M	9	3	37	31	90	38
20	034	20	M	8	4	32	10	30	10
21	035	43	M	9	3	25	11	60	25
22	037	38	M	9	3	39	19	36	18
23	038	30	F	8	4	25	9	40	16
24	040	31	F	7	3	35	8	45	20
25	041	33	M	8	3	50	7	60	25
26	042	45	F	9	5	40	7	50	25
27	043	48	F	8	4	40	10	30	15

*Randomized controlled clinical trial to evaluate prophylactic properties of Ayurvedic Treatment Protocol in refractory and chronic migraine patients*

*Project Progress Report*

S. No.	CRF No.	Age	Sex	VAS		MIDAS		No. of headache days in last 90 days	
				Pre-Treatment	Post-Treatment	Pre-Treatment	Post-Treatment	Pre-Treatment	Post-Treatment
28	044	27	F	9	4	31	8	45	27
29	045	23	F	9	4	25	6	33	15
30	046	50	M	8	3	36	11	45	20
31	049	30	F	7	4	43	11	50	32
32	051	35	F	9	4	29	7	60	36
33	052	30	F	8	4	32	10	60	45
34	054	37	M	8	4	40	7	90	50
35	056	28	F	9	3	27	8	60	30
36	057	18	M	8	4	48	12	45	25
37	062	45	M	8	3	36	6	50	27
38	065	18	F	8	4	31	5	60	36
39	071	22	M	8	4	42	12	36	13
40	072	46	F	9	3	38	13	35	12
41	073	28	M	8	3	45	15	48	15
42	074	42	F	7	2	28	7	60	10
43	075	28	F	8	3	37	8	50	12
44	077	35	F	7	3	34	10	65	9
45	079	28	F	9	3	44	11	72	18
46	081	55	F	9	4	53	20	60	10
47	083	43	F	8	4	38	24	50	16
48	084	28	F	8	5	45	30	50	Rescue
49	087	31	F	9	Rescue	50	Rescue	75	Rescue
50	090	25	F	8	Rescue	45	Rescue	60	Rescue
51	092	25	F	8	Rescue	47	Rescue	60	Rescue
52	095	34	F	7	Rescue	32	Rescue	90	Rescue
53	097	45	F	8	Rescue	42	Rescue	45	Rescue
54	101	25	F	8	Rescue	45	Rescue	55	Rescue

\*Rescue= Ongoing treatment

*Randomized controlled clinical trial to evaluate prophylactic properties of Ayurvedic Treatment Protocol in refractory and chronic migraine patients*

## *Project Progress Report*

### **b) Conclusion**

Patients are treated with ayurvedic treatment protocol comprising indigenously prepared 4 herbo-mineral formulation along with regulated diet and life-style. Ayurvedic treatment was well tolerated by the patients without any adverse events. Further statistics will have to be applied to both the samples to find out NNT, P value with confidence intervals.

### **c) Budget:**

<b>Particulars</b>	<b>Grants received from IPCA till date</b>	<b>Other receipts / interest earned, if any, on the IPCA grants</b>	<b>Expenditure (excluding commitments) of the Project</b>	<b>Balance</b>	<b>Remarks</b>
Grant Received	1,256,296				
Expenses:					
Human Resource			1,279,200	(22,904)	
Consumable & Contingency			15,400	(38,304)	
TA/DA for Patients			312,620	(350,924)	
Investigation Charges			277,300	(628,224)	
Administrative Charges (10%)			188,452	(816,676)	
<b>Total</b>	<b>1,256,296</b>	<b>-</b>	<b>2,072,972</b>	<b>(816,676)</b>	

### **d) Research work which remains to be done under the project**

More number of patients will be enrolled and will be randomized accordingly.

Dr. Manjari Tripathi

Professor

Dept. of Neurology, AIIMS

*Randomized controlled clinical trial to evaluate prophylactic properties of Ayurvedic Treatment Protocol in refractory and chronic migraine patients*